



Senior Phase Handbook

Baringa State Secondary College

June 2023



Introduction

Establishing patterns of success in Year 10

At Baringa State Secondary College we promote the following patterns of success with all year 10 students

Demonstrating a pattern of success in year 10



Student indicators of pattern of success:

- **Consistent, high percentage, attendance**
- **Productive and consistent engagement in the learning environment**
- **Meeting and completing the requirements of the learning tasks in class and assessment**
- **Respectful and Safe behaviour in the learning environment**
- **Pattern of academic success, achievement at level or better in the subject.**
- **Knowing what you are being assessed on and how to demonstrate that skill or cognition in the learning and the assessment**

Courses of Study in Senior Phase

Baringa State Secondary College offers General Subject, Applied subjects, and access to VET Certificate courses through external (SAS) providers.

Years 11 and 12

All students in year 11 must study six subjects in each of the four semesters which make up year 11 and 12. Three subjects must be studied continuously from Semester 1 Year 11 until the end of year 12 in order for students to gain their Queensland Certificate of Education (QCE).

Compulsory Subjects:

All year 11 and 12 students are required to study –

- General English or Essential English

Choosing Subjects to align with Pathway options:

1. Consider the range of pathway options you want available to you at the end of the Senior Phase
2. Consider any pre-requisite learnings required for your pathway
3. Choose subjects in which you have demonstrated ability and aptitude, and a pattern of academic success
4. Choose subjects that you are prepared to work in and meet the learning and assessment requirements
5. Choose subjects, in consultation with a member of the college SET planning team, that align to your pathway options

If you require additional support, outside of the college preparation process, please make an appointment with the College Guidance Officer.

Finance in Senior Phase:

All students in each year of the senior phase (year 11 and year 12) will be charged a general Student Resource Scheme (SRS) fee to contribute towards the general running costs of delivering education programs to all students.

In Year 11, students will experience the core subject of either General English or Essential English and nominate five subject preferences for the year. To align with your students learning, the college will invoice a Year 11 General SRS fee, approximately \$150-\$200 in early January 2024 and then based on your student's subject preferences, a Subject SRS fee.

The General Student Resource Scheme fee for Year 11 can either be paid in full by Friday 2nd February 2024 or paid by three termly instalments. Information regarding termly instalments for 2024 will be communicated later this year.

For Year 11 Subject Student Resource Scheme fees, these will be invoiced mid-February 2024 and fees are required to be paid in full by Thursday 28th March, 2024

The Subject SRS fee outlined in this handbook is set as a guide for families, with the final invoice costing to be communicated prior to SET plan interviews in Week 5, Term 3. Fees will be invoiced, each year, in year 11 and 12.

Certificate course options offered by external providers have the fee for the course listed for each Certificate.

Vet in Schools Funding- VETiS

What is VETiS?

Vocational Education and Training in Schools (VETiS) is a program that enables students to gain nationally recognised qualifications while at school. Students learn skills and knowledge required for specific industries.

VETiS can be undertaken in years 10, 11 and 12, and can count towards the Queensland Certificate of Education.

VET can also be undertaken while a young person is still enrolled at school through a school-based apprenticeship or traineeship (SAT).

How is VETiS funded in Queensland?

In Queensland, VETiS is funded from two main sources:

1. Schools—many schools are also registered training organisations (school RTOs) and deliver VETiS training to students. The majority of VETiS training in Queensland is delivered and resourced by schools RTOs. **Baringa SSC is not currently an RTO.**
2. Training (VET investment budget)—provides funding to any RTO that is approved by the Department of Employment, Small Business and Training as a Skills Assure supplier (SAS).

Can students undertake any VETiS qualification?

Students undertaking VETiS, which is funded and delivered by a school RTO or self-funded, can undertake any qualification across a range of industries. This includes certificate III or higher level qualifications.

Students undertaking VETiS, which is funded by the VET investment budget, can choose from a range of certificate I and II level qualifications, referred to as employment stream qualifications. These qualifications have been identified in consultation with industry as leading to employment outcomes and are based on skills shortages and Queensland Government priorities. Subsidised VETiS qualifications can be found on the Priority Skills List.

Students undertaking VETiS, funded by the VET investment budget, can complete one employment stream qualification at the certificate I or II level.

Senior Education Profile

Students in Queensland are issued with a Senior Education Profile (SEP) upon completion of senior studies. This profile may include a:

- Senior Statement
- Queensland Certificate of Education (QCE)
- Queensland Certificate of Individual Achievement (QCIA).

For more information about the SEP see www.qcaa.qld.edu.au/senior/certificates-qualifications/sep.

Senior Statement

The Senior Statement is a transcript of a student's learning account. It shows all QCE-contributing studies and the results achieved that may contribute to the award of a QCE.

If a student has a Senior Statement, then they have satisfied the completion requirements for Year 12 in Queensland.

Queensland Certificate of Education (QCE)

Students may be eligible for a Queensland Certificate of Education (QCE) at the end of their senior schooling. Students who do not meet the QCE requirements can continue to work towards the certificate post-secondary schooling. The QCAA awards a QCE in the following July or December, once a student becomes eligible. Learning accounts are closed after nine years; however, a student may apply to the QCAA to have the account reopened and all credit continued.

Queensland Certificate of Individual Achievement (QCIA)

The Queensland Certificate of Individual Achievement (QCIA) reports the learning achievements of eligible students who complete an individual learning program. At the end of the senior phase of learning, eligible students achieve a QCIA. These students have the option of continuing to work towards a QCE post-secondary schooling.

Senior education and training (SET) planning

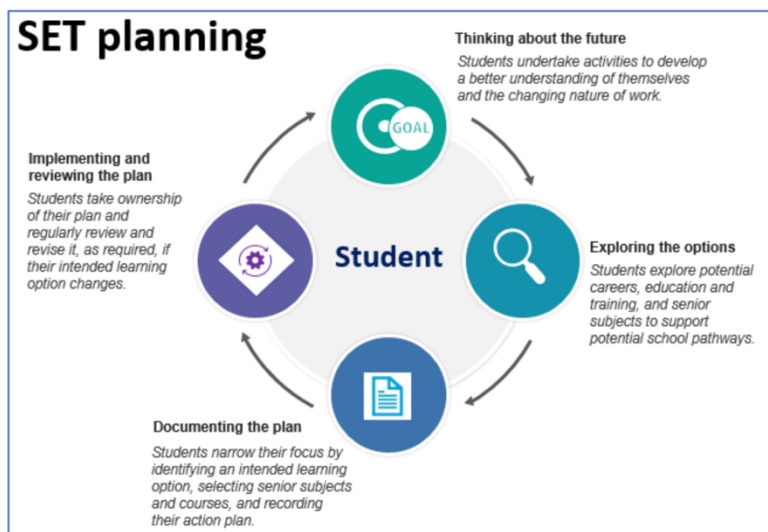
Information for parents and carers

What is SET planning?

SET planning is a process designed to guide your child on a successful pathway throughout senior secondary and beyond Year 12 into post-school education and work.

The aim of SET planning is to provide your child with the skills and knowledge needed to develop a genuine career pathway, and a life of personal choice.

SET planning begins with career exploration activities in junior secondary and builds in Year 10, when your child commits to their proposed pathway by developing their SET plan.



Senior subjects

The QCAA develops five types of senior subject syllabuses — Applied, General, General (Extension), General (Senior External Examination) and Short Course. Results in Applied and General subjects contribute to the award of a QCE and may contribute to an Australian Tertiary Admission Rank (ATAR) calculation, although no more than one result in an Applied subject can be used in the calculation of a student's ATAR.

Typically, it is expected that most students will complete these courses across Years 11 and 12. All subjects build on the P–10 Australian Curriculum.

For more information about specific subjects, schools, students and parents/carers are encouraged to access the relevant senior syllabuses at www.qcaa.qld.edu.au/senior/senior-subjects and, for Senior External Examinations, www.qcaa.qld.edu.au/senior/see

Applied and Applied (Essential) syllabuses

Applied subjects are suited to students who are primarily interested in pathways beyond senior secondary schooling that lead to vocational education and training or work.

General syllabuses

General subjects are suited to students who are interested in pathways beyond senior secondary schooling that lead primarily to tertiary studies and to pathways for vocational education and training and work.

General (Senior External Examination) syllabuses

Senior External Examinations are suited to:

- students in the final year of senior schooling (Year 12) who are unable to access particular subjects at their school
- students less than 17 years of age who are not enrolled in a Queensland secondary school, have not completed Year 12 and do not hold a Queensland Certificate of Education (QCE) or Senior Statement
- adult students at least 17 years of age who are not enrolled at a Queensland secondary school.

Underpinning factors

All senior syllabuses are underpinned by:

- literacy — the set of knowledge and skills about language and texts essential for understanding and conveying content
- numeracy — the knowledge, skills, behaviours and dispositions that students need to use mathematics in a wide range of situations, to recognise and understand the role of mathematics in the world, and to develop the dispositions and capacities to use mathematical knowledge and skills purposefully.

Applied and Applied (Essential) syllabuses

In addition to literacy and numeracy, Applied syllabuses are underpinned by:

- applied learning — the acquisition and application of knowledge, understanding and skills in real-world or lifelike contexts
- community connections — the awareness and understanding of life beyond school through authentic, real-world interactions by connecting classroom experience with the world outside the classroom
- skills for work — the set of knowledge, understanding and non-technical skills that underpin successful participation in work.

General syllabuses and Short Course syllabuses

In addition to literacy and numeracy, General syllabuses and Short Course syllabuses are underpinned by:

- 21st century skills — the attributes and skills students need to prepare them for higher education, work and engagement in a complex and rapidly changing world. These include critical thinking, creative thinking, communication, collaboration and teamwork, personal and social skills, and information & communication technologies (ICT) skills.

Vocational education and training (VET)

Students can access VET programs through the school if it:

- is a registered training organisation (RTO)
- has a third-party arrangement with an external provider who is an RTO
- offers opportunities for students to undertake school-based apprenticeships or traineeships.

Australian Tertiary Admission Rank (ATAR) eligibility

The calculation of an Australian Tertiary Admission Rank (ATAR) will be based on a student's:

- best five scaled General subject results or
- best results in a combination of four General subject results plus an Applied subject result or a Certificate III or higher VET qualification.

The Queensland Tertiary Admissions Centre (QTAC) has responsibility for ATAR calculations.

English requirement

Eligibility for an ATAR will require satisfactory completion of a QCAA English subject.

Satisfactory completion will require students to attain a result that is equivalent to a C Level of Achievement in one of five subjects — English, Essential English, Literature, English and Literature Extension or English as an Additional Language.

While students must meet this standard to be eligible to receive an ATAR, it is not mandatory for a student's English result to be included in the calculation of their ATAR.

Applied and Applied (Essential) syllabuses

Syllabuses are designed for teachers to make professional decisions to tailor curriculum and assessment design and delivery to suit their school context and the goals, aspirations and abilities of their students within the parameters of Queensland's senior phase of learning.

In this way, the syllabus is not the curriculum. The syllabus is used by teachers to develop curriculum for their school context. The term *course of study* describes the unique curriculum and assessment that students engage with in each school context. A course of study is the product of a series of decisions made by a school to select, organise and contextualise units, integrate complementary and important learning, and create assessment tasks in accordance with syllabus specifications.

It is encouraged that, where possible, a course of study is designed such that teaching, learning and assessment activities are integrated and enlivened in an authentic applied setting.

Course structure

Applied and Applied (Essential) syllabuses are four-unit courses of study.

The syllabuses contain QCAA-developed units as options for schools to select from to develop their course of study.

Units and assessment have been written so that they may be studied at any stage in the course. All units have comparable complexity and challenge in learning and assessment. However, greater scaffolding and support may be required for units studied earlier in the course.

Each unit has been developed with a notional time of 55 hours of teaching and learning, including assessment.

Curriculum

Applied syllabuses set out only what is essential while being flexible so teachers can make curriculum decisions to suit their students, school context, resources and expertise.

Schools have autonomy to decide:

- which four units they will deliver
- how and when the subject matter of the units will be delivered
- how, when and why learning experiences are developed, and the context in which the learning will occur
- how opportunities are provided in the course of study for explicit and integrated teaching and learning of complementary skills such as literacy, numeracy and 21st century skills
- how the subject-specific information found in this section of the syllabus is enlivened through the course of study.

Giving careful consideration to each of these decisions can lead teachers to develop units that are rich, engaging and relevant for their students.

Assessment

Applied syllabuses set out only what is essential while being flexible so teachers can make assessment decisions to suit their students, school context, resources and expertise.

Applied syllabuses contain assessment specifications and conditions for the two assessment instruments that must be implemented with each unit. These specifications and conditions ensure comparability, equity and validity in assessment.

Schools have autonomy to decide:

- specific assessment task details within the parameters mandated in the syllabus
- assessment contexts to suit available resources
- how the assessment task will be integrated with teaching and learning activities
- how authentic the task will be.

Teachers make A–E judgments on student responses for each assessment instrument using the relevant instrument-specific standards. In the final two units studied, the QCAA uses a student's results for these assessments to determine an exit result.

More information about assessment in Applied senior syllabuses is available in [Section 7.3.1](#) of the *QCE and QCIA policy and procedures handbook*.

Essential English and Essential Mathematics — Common internal assessment

For the two Applied (Essential) syllabuses, students complete a total of *four* summative internal assessments in Units 3 and 4 that count toward their overall subject result. Schools develop *three* of the summative internal assessments for each of these subjects and the other summative assessment is a common internal assessment (CIA) developed by the QCAA.

The CIA for Essential English and Essential Mathematics is based on the learning described in Unit 3 of the respective syllabus. The CIA is:

- developed by the QCAA
- common to all schools
- delivered to schools by the QCAA
- administered flexibly in Unit 3
- administered under supervised conditions
- marked by the school according to a common marking scheme developed by the QCAA.

The CIA is not privileged over the other summative internal assessment.

Summative internal assessment — instrument-specific standards

The Essential English and Essential Mathematics syllabuses provide instrument-specific standards for the three summative internal assessments in Units 3 and 4.

The instrument-specific standards describe the characteristics evident in student responses and align with the identified assessment objectives. Assessment objectives are drawn from the unit objectives and are contextualised for the requirements of the assessment instrument.

Duplication of Learning:

The QCAA considers Applied subjects and VET qualifications at Australian Qualifications Framework (AQF) Level 2 that have similar subject matter and learning goals to be duplication of learning.

Students may enrol in any VET qualification. However, when a student is enrolled in both the identified Applied subject and VET qualification that has been listed as having similar learning, credit for the QCE is determined by the QCAA. Relevant Applied subjects and related qualifications are identified in the table 'Applied subjects and Certificate II VET qualifications with duplication of learning'. Students may enrol in a combination of these courses; however, where duplication has been identified, QCE credit will only accrue for one course, i.e. a maximum of four QCE credits. At the time of enrolment, the list of courses in the table applies. This list of subjects and qualifications is reviewed and updated annually. *If a qualification on this list is superseded, the new qualification will also be considered 'duplication of learning' unless otherwise advised.*

Applied subjects and Certificate II VET qualifications with duplication of learning			
Learning area	Applied subject	VET qualification	Max. QCE credit
English	Essential English	No duplication	4
Health and Physical Education	Sport & Recreation	SIS20115 Certificate II in Sport and Recreation	4
Humanities and Social Sciences	Business Studies	BSB20115 Certificate II in Business	4
	Social & Community Studies	No duplication	4
Mathematics	Essential Mathematics	No duplication	4
Technologies	Building & Construction Skills	CPC20220 Certificate II in Construction Pathways	4
	Engineering Skills	MEM20413 Certificate II in Engineering Pathways	4
	Furnishing Skills	MSF20516 Certificate II in Furniture Making Pathways	4
	Hospitality Practices	SIT20316 Certificate II in Hospitality SIT20322 Certificate II in Hospitality	4
	Industrial Graphics Skills	No duplication	4
	Industrial Technology Skills	MSM20216 Certificate II in Manufacturing Technology	4
	Information & Communication Technology	ICT20115 Certificate II in Information, Digital Media and Technology ICT20120 Certificate II in Applied Digital Technologies	4
The Arts	Arts in Practice	No duplication	4
	Drama in Practice	No duplication	4
	Music in Practice	CUA20620 Certificate II in Music	4
	Visual Arts in Practice	CUA20720 Certificate II in Visual Arts	4
Note: If a qualification on this list is superseded, the new qualification will be considered 'duplication of learning' unless otherwise advised.			

General syllabuses

Course overview

General syllabuses are developmental four-unit courses of study.

Units 1 and 2 provide foundational learning, allowing students to experience all syllabus objectives and begin engaging with the course subject matter. It is intended that Units 1 and 2 are studied as a pair. Assessment in Units 1 and 2 provides students with feedback on their progress in a course of study and contributes to the award of a QCE.

Students should complete Units 1 and 2 before starting Units 3 and 4.

Units 3 and 4 consolidate student learning. Assessment in Units 3 and 4 is summative and student results contribute to the award of a QCE and to ATAR calculations.

Assessment

Units 1 and 2 assessments

Schools decide the sequence, scope and scale of assessments for Units 1 and 2. These assessments should reflect the local context. Teachers determine the assessment program, tasks and marking guides that are used to assess student performance for Units 1 and 2.

Units 1 and 2 assessment outcomes provide feedback to students on their progress in the course of study. Schools should develop at least *two* but no more than *four* assessments for Units 1 and 2. At least *one* assessment must be completed for *each* unit.

Schools report satisfactory completion of Units 1 and 2 to the QCAA, and may choose to report levels of achievement to students and parents/carers using grades, descriptive statements or other indicators.

Units 3 and 4 assessments

Students complete a total of *four* summative assessments — three internal and one external — that count towards the overall subject result in each General subject.

Schools develop *three* internal assessments for each senior subject to reflect the requirements described in Units 3 and 4 of each General syllabus.

The three summative internal assessments need to be endorsed by the QCAA before they are used in schools. Students' results in these assessments are externally confirmed by QCAA assessors. These confirmed results from internal assessment are combined with a single result from an external assessment, which is developed and marked by the QCAA. The external assessment result for a subject contributes to a determined percentage of a students' overall subject result. For most subjects this is 25%; for Mathematics and Science subjects it is 50%.

Instrument-specific marking guides

Each syllabus provides instrument-specific marking guides (ISMGs) for summative internal assessments.

The ISMGs describe the characteristics evident in student responses and align with the identified assessment objectives. Assessment objectives are drawn from the unit objectives and are contextualised for the requirements of the assessment instrument.

Schools cannot change or modify an ISMG for use with summative internal assessment.

As part of quality teaching and learning, schools should discuss ISMGs with students to help them understand the requirements of an assessment task.

External assessment

External assessment is summative and adds valuable evidence of achievement to a student's profile. External assessment is:

- common to all schools
- administered under the same conditions at the same time and on the same day
- developed and marked by the QCAA according to a commonly applied marking scheme.

The external assessment contributes a determined percentage (see specific subject guides — assessment) to the student's overall subject result and is not privileged over summative internal assessment.

English

Applied

- Essential English

General

- English

Languages

General

- Japanese
Via Distance Education

Technologies

Applied

- Engineering Skills
- Furnishing Skills
- Hospitality Practices
- Information & Communication Technology

General

- Engineering

Health and Physical Education

Applied

- Sport & Recreation

Mathematics

Applied

- Essential Mathematics

General

- General Mathematics
- Mathematical Methods
- Specialist Mathematics

Humanities and Social Science

Applied

- Business Studies
- Social & Community Studies

General

- Business
- Legal Studies

Sciences

General

- Biology
- Chemistry
- Physics
- Psychology

The Arts

Applied

- Drama in Practice
- Music in Practice
- Visual Arts in Practice

General

- Drama
- Music
- Visual Art

Essential English develops and refines students' understanding of language, literature and literacy to enable them to interact confidently and effectively with others in everyday, community and social contexts. Students recognise language and texts as relevant in their lives now and in the future and learn to understand, accept or challenge the values and attitudes in these texts.

Students engage with language and texts to foster skills to communicate confidently and effectively in Standard Australian English in a variety of contemporary contexts and social situations, including everyday, social, community, further education and work-related contexts. They choose generic structures, language, language features and technologies to best convey meaning. They develop skills to read for meaning and purpose, and to use, critique and appreciate a range of contemporary literary and non-literary texts.

Students use language effectively to produce texts for a variety of purposes and audiences and engage creative and imaginative thinking to explore their own world and the worlds of others. They actively and critically interact with a range of texts, developing an awareness of how the language they engage with positions them and others.

Pathways

A course of study in Essential English promotes open-mindedness, imagination, critical awareness and intellectual flexibility — skills that prepare students for local and global citizenship, and for lifelong learning across a wide range of contexts.

Objectives

By the conclusion of the course of study, students will:

- use patterns and conventions of genres to achieve particular purposes in cultural contexts and social situations
- use appropriate roles and relationships with audiences
- construct and explain representations of identities, places, events and concepts
- make use of and explain the ways cultural assumptions, attitudes, values and beliefs underpin texts and influence meaning
- explain how language features and text structures shape meaning and invite particular responses
- select and use subject matter to support perspectives
- sequence subject matter and use mode-appropriate cohesive devices to construct coherent texts
- make mode-appropriate language choices according to register informed by purpose, audience and context
- use language features to achieve particular purposes across modes.

Structure

Unit 1	Unit 2	Unit 3	Unit 4
Language that works <ul style="list-style-type: none"> Responding to a variety of texts used in and developed for a work context Creating multimodal and written texts 	Texts and human experiences <ul style="list-style-type: none"> Responding to reflective and nonfiction texts that explore human experiences Creating spoken and written texts 	Language that influences <ul style="list-style-type: none"> Creating and shaping perspectives on community, local and global issues in texts Responding to texts that seek to influence audiences 	Representations and popular culture texts <ul style="list-style-type: none"> Responding to popular culture texts Creating representations of Australian identifies, places, events and concepts

Assessment

Schools devise assessments in Units 1 and 2 to suit their local context.

In Units 3 and 4 students complete *four* summative assessments. Schools develop three summative internal assessments and the common internal assessment (CIA) is developed by the QCAA.

Summative assessments

Unit 3	Unit 4
Summative internal assessment 1 (IA1): <ul style="list-style-type: none"> Extended response — spoken/signed response 	Summative internal assessment 3 (IA3): <ul style="list-style-type: none"> Extended response — Multimodal response
Summative internal assessment 2 (IA2): <ul style="list-style-type: none"> Common internal assessment (CIA) — short response examination 	Summative internal assessment (IA4): <ul style="list-style-type: none"> Extended response — Written response
Finance	
No Subject SRS fee	No External Provider Fee

English focuses on the study of both literary texts and non-literary texts, developing students as independent, innovative and creative learners and thinkers who appreciate the aesthetic use of language, analyse perspectives and evidence, and challenge ideas and interpretations through the analysis and creation of varied texts.

Students are offered opportunities to interpret and create texts for personal, cultural, social and aesthetic purposes. They learn how language varies according to context, purpose and audience, content, modes and mediums, and how to use it appropriately and effectively for a variety of purposes. Students have opportunities to engage with diverse texts to help them develop a sense of themselves, their world and their place in it.

Students communicate effectively in Standard Australian English for the purposes of responding to and creating texts. They make choices about generic structures, language, textual features and technologies for participating actively in literary analysis and the creation of texts in a range of modes, mediums and forms, for a variety of purposes and audiences. They explore how literary and non-literary texts shape perceptions of the world, and consider ways in which texts may reflect or challenge social and cultural ways of thinking and influence audiences.

Pathways

A course of study in English promotes open-mindedness, imagination, critical awareness and intellectual flexibility — skills that prepare students for local and global citizenship, and for lifelong learning across a wide range of contexts.

Objectives

By the conclusion of the course of study, students will:

- use patterns and conventions of genres to achieve particular purposes in cultural contexts and social situations
- establish and maintain roles of the writer/speaker/signer/designer and relationships with audiences
- create and analyse perspectives and representations of concepts, identities, times and places
- make use of and analyse the ways cultural assumptions, attitudes, values and beliefs underpin texts and invite audiences to take up positions
- use aesthetic features and stylistic devices to achieve purposes and analyse their effects in texts
- select and synthesise subject matter to support perspectives
- organise and sequence subject matter to achieve particular purposes
- use cohesive devices to emphasise ideas and connect parts of texts
- make language choices for particular purposes and contexts
- use grammar and language structures for particular purposes
- use mode-appropriate features to achieve particular purposes.

Structure

Unit 1	Unit 2	Unit 3	Unit 4
Perspectives and texts <ul style="list-style-type: none"> Examining and creating perspectives in texts Responding to a variety of non-literary and literary texts Creating responses for public audiences and persuasive texts 	Texts and culture <ul style="list-style-type: none"> Examining and shaping representations of culture in texts Responding to literary and non-literary texts, including a focus on Australian texts Creating imaginative and analytical texts 	Textual connections <ul style="list-style-type: none"> Exploring connections between texts Examining different perspectives of the same issue in texts and shaping own perspectives Creating responses for public audiences and persuasive texts 	Close study of literary texts <ul style="list-style-type: none"> Engaging with literary texts from diverse times and places Responding to literary texts creatively and critically Creating imaginative and analytical texts

Assessment

Schools devise assessments in Units 1 and 2 to suit their local context.

In Units 3 and 4 students complete *four* summative assessments. The results from each of the assessments are added together to provide a subject score out of 100. Students will also receive an overall subject result (A–E).

Summative assessments

Unit 3		Unit 4	
Summative internal assessment 1 (IA1): • Extended response — written response for a public audience	25%	Summative internal assessment 3 (IA3): • Examination — imaginative written response	25%
Summative internal assessment 2 (IA2): • Extended response — persuasive spoken response	25%	Summative external assessment (EA): • Examination — analytical written response	25%
Finance			
No Subject SRS Fee		No External Provider Fee	

Sport & Recreation

Applied senior subject

Applied

Sport and recreation activities are a part of the fabric of Australian life and are an intrinsic part of Australian culture. These activities can encompass social and competitive sport, aquatic and community recreation, fitness and outdoor recreation. For many people, sport and recreation activities form a substantial component of their leisure time. Participation in sport and recreation can make positive contributions to a person's wellbeing.

Sport and recreation activities also represent growth industries in Australia, providing many employment opportunities, many of which will be directly or indirectly associated with hosting Commonwealth, Olympic and Paralympic Games. The skills developed in Sport & Recreation may be oriented toward work, personal fitness or general health and wellbeing. Students will be involved in learning experiences that allow them to develop their interpersonal abilities and encourage them to appreciate and value active involvement in sport and recreational activities, contributing to ongoing personal and community development throughout their lives.

Sport is defined as activities requiring physical exertion, personal challenge and skills as the primary focus, along with elements of competition. Within these activities, rules and patterns of behaviour governing the activity exist formally through organisations. Recreation activities are defined as active pastimes engaged in for the purpose of relaxation, health and wellbeing and/or enjoyment and are recognised as having socially worthwhile qualities. Active recreation requires physical exertion and human activity. Physical activities that meet these classifications can include active play and minor games, challenge and adventure activities, games and sports, lifelong physical activities, and

rhythmic and expressive movement activities.

Active participation in sport and recreation activities is central to the learning in Sport & Recreation. Sport & Recreation enables students to engage in sport and recreation activities to experience and learn about the role of sport and recreation in their lives, the lives of others and the community.

Engagement in these activities provides a unique and powerful opportunity for students to experience the challenge and fun of physical activity while developing vocational, life and physical skills.

Each unit requires that students engage in sport and/or recreation activities. They investigate, plan, perform and evaluate procedures and strategies and communicate appropriately to particular audiences for particular purposes.

Pathways

A course of study in Sport & Recreation can establish a basis for further education and employment in the fields of fitness, outdoor recreation and education, sports administration, community health and recreation and sport performance.

Objectives

By the conclusion of the course of study, students should:

- Investigate activities and strategies to enhance outcomes
- plan activities and strategies to enhance outcomes
- perform activities and strategies to enhance outcomes
- evaluate activities and strategies to enhance outcomes.

Structure

Sport & Recreation is a four-unit course of study. This syllabus contains 12 QCAA-developed units as options for schools to select from to develop their course of study.

Unit option	Unit title
Unit option A	Aquatic recreation
Unit option B	Athlete development and wellbeing
Unit option C	Challenge in the outdoors
Unit option D	Coaching and officiating
Unit option E	Community recreation
Unit option F	Emerging trends in sport, fitness and recreation
Unit option G	Event management
Unit option H	Fitness for sport and recreation
Unit option I	Marketing and communication in sport and recreation
Unit option J	Optimising performance
Unit option K	Outdoor leadership
Unit option L	Sustainable outdoor recreation

Assessment

Students complete two assessment tasks for each unit. The assessment techniques used in Sport & Recreation are:

Technique	Description	Response requirements
Performance	Students investigate, plan, perform and evaluate activities and strategies to enhance outcomes in the unit context.	Performance Performance: up to 4 minutes Investigation, plan and evaluation One of the following: <ul style="list-style-type: none"> • Multimodal (at least two modes delivered at the same time): up to 3 minutes, 6 A4 pages, or equivalent digital media • Spoken: up to 3 minutes, or signed equivalent • Written: up to 500 words
Project	Students investigate, plan, perform and evaluate activities and strategies to enhance outcomes in the unit context.	Investigation and session plan One of the following: <ul style="list-style-type: none"> • Multimodal (at least two modes delivered at the same time): up to 3 minutes, 6 A4 pages, or equivalent digital media • Spoken: up to 3 minutes, or signed equivalent • Written: up to 500 words Performance Performance: up to 4 minutes

		Evaluation One of the following: <ul style="list-style-type: none"> • Multimodal (at least two modes delivered at the same time): up to 3 minutes, 6 A4 pages, or equivalent digital media • Spoken: up to 3 minutes, or signed equivalent • Written: up to 500 words
Finance		
Approximate Subject SRS Fee: \$50		No External Provider Fee

Business Studies provides opportunities for students to develop practical business knowledge and skills for use, participation and work in a range of business contexts. Exciting and challenging career opportunities exist in a range of business contexts.

A course of study in Business Studies focuses on business essentials and communication skills delivered through business contexts. Students explore business concepts and develop business practices to produce solutions to business situations.

Business practices provide the foundation of an organisation to enable it to operate and connect with its customers, stakeholders and community. The business practices explored in this course of study could include working in administration, working in finance, working with customers, working in marketing, working in events, and entrepreneurship.

In a course of study, students develop their business knowledge and understanding through applying business practices in business contexts, such as retail, health services, entertainment, tourism, travel and mining. Schools may offer a range of situations and experiences to engage in authentic learning experiences through connections within the school, local community or organisations, businesses and professionals outside of the school. These situations and experiences provide students with opportunities to develop skills important

in the workplace to successfully participate in future employment.

Students develop effective decision-making skills and learn how to plan, implement and evaluate business practices, solutions and outcomes, resulting in improved literacy, numeracy and 21st century skills. They examine business information and apply their knowledge and skills related to business situations. The knowledge and skills developed in Business Studies enables students to participate effectively in the business world and as citizens dealing with issues emanating from business activities.

Pathways

A course of study in Business Studies can establish a basis for further education and employment in office administration, data entry, retail, sales, reception, small business, finance administration, public relations, property management, events administration and marketing.

Objectives

By the end of the course of study, students should:

- explain business concepts, processes and practices
- examine business information
- apply business knowledge
- communicate responses
- evaluate projects.

Structure

Business Studies is a four-unit course of study. This syllabus contains six QCAA-developed units as options for schools to select from to develop their course of study.

Unit option	Unit title
Unit option A	Working in administration
Unit option B	Working in finance
Unit option C	Working with customers
Unit option D	Working in marketing
Unit option E	Working in events
Unit option F	Entrepreneurship

Assessment

Students complete two assessment tasks for each unit. The assessment techniques used in Business Studies are:

Technique	Description	Response requirements
Extended response	Students respond to stimulus related to a business scenario about the unit context.	One of the following: <ul style="list-style-type: none"> • Multimodal (at least two modes delivered at the same time): up to 7 minutes, 8 A4 pages, or equivalent digital media • Spoken: up to 7 minutes, or signed equivalent • Written: up to 1000 words
Project	Students develop a business solution for a scenario about the unit context.	Action plan One of the following: <ul style="list-style-type: none"> • Multimodal (at least two modes delivered at the same time): up to 5 minutes, 6 A4 pages, or equivalent digital media • Spoken: up to 4 minutes, or signed equivalent • Written: up to 600 words Evaluation One of the following: <ul style="list-style-type: none"> • Multimodal (at least two modes delivered at the same time): up to 5 minutes, 6 A4 pages, or equivalent digital media • Spoken: up to 4 minutes, or signed equivalent • Written: up to 600 words
Finance		
Approximate Subject SRS Fee: \$20		No External Provider Fee

Social & Community Studies

Applied senior subject

Applied

Social & Community Studies fosters personal and social knowledge and skills that lead to self-management and concern for others in the broader community. It empowers students to think critically, creatively and constructively about their future role in society.

Knowledge and skills to enhance personal development and social relationships provide the foundation of the subject. Personal development incorporates concepts and skills related to self-awareness and self-management, including understanding personal characteristics, behaviours and values; recognising perspectives; analysing personal traits and abilities; and using strategies to develop and maintain wellbeing.

The focus on social relationships includes concepts and skills to assist students engage in constructive interpersonal relationships, as well as participate effectively as members of society, locally, nationally or internationally.

Students engage with this foundational knowledge and skills through a variety of topics that focus on lifestyle choices, personal finance, health, employment, technology, the arts, and Australia's place in the world, among others. In collaborative learning environments, students use an inquiry approach to investigate the dynamics of society and the benefits of working thoughtfully with others in the community, providing them with the knowledge and skills

to establish positive relationships and networks, and to be active and informed citizens.

Social & Community Studies encourages students to explore and refine personal values and lifestyle choices. In partnership with families, the school community and the community beyond school, including virtual communities, schools may offer a range of contexts and experiences that provide students with opportunities to practise, develop and value social, community and workplace participation skills.

Pathways

A course of study in Social & Community Studies can establish a basis for further education and employment, as it helps students develop the skills and attributes necessary in all workplaces.

Objectives

By the conclusion of the course of study, students should:

- explain personal and social concepts and skills
- examine personal and social information
- apply personal and social knowledge
- communicate responses
- evaluate projects.

Structure

Social & Community Studies is a four-unit course of study. This syllabus contains six QCAA-developed units as options for schools to select from to develop their course of study.

Unit option	Unit title
Unit option A	Lifestyle and financial choices
Unit option B	Healthy choices for mind and body
Unit option C	Relationships and work environments
Unit option D	Legal and digital citizenship
Unit option E	Australia and its place in the world
Unit option F	Arts and identity

Assessment

Students complete two assessment tasks for each unit. The assessment techniques used in Social & Community Studies are:

Technique	Description	Response requirements
Project	Students develop recommendations or provide advice to address a selected issue related to the unit context.	<p>Item of communication One of the following:</p> <ul style="list-style-type: none"> • Multimodal (at least two modes delivered at the same time): up to 5 minutes, 8 A4 pages, or equivalent digital media • Spoken: up to 4 minutes, or signed equivalent • Written: up to 800 words <p>Evaluation One of the following:</p> <ul style="list-style-type: none"> • Multimodal (at least two modes delivered at the same time): up to 4 minutes, 6 A4 pages, or equivalent digital media • Spoken: up to 3 minutes, or signed equivalent • Written: up to 500 words
Extended response	Students respond to stimulus related to issue that is relevant to the unit context.	<p>One of the following:</p> <ul style="list-style-type: none"> • Multimodal (at least two modes delivered at the same time): up to 7 minutes, 10 A4 pages, or equivalent digital media • Spoken: up to 7 minutes, or signed equivalent • Written: up to 1000 words
Investigation	Students investigate an issue relevant to the unit context by collecting and examining information to consider solutions and form a response.	<p>One of the following:</p> <ul style="list-style-type: none"> • Multimodal (at least two modes delivered at the same time): up to 7 minutes, 10 A4 pages, or equivalent digital media • Spoken: up to 7 minutes, or signed equivalent • Written: up to 1000 words
Finance		
Approximate Subject SRS Fee: \$20		No External Provider Fee

Business provides opportunities for students to develop business knowledge and skills to contribute meaningfully to society, the workforce and the marketplace and prepares them as potential employees, employers, leaders, managers and entrepreneurs.

Students investigate the business life cycle, develop skills in examining business data and information and learn business concepts, theories, processes and strategies relevant to leadership, management and entrepreneurship. They investigate the influence of, and implications for, strategic development in the functional areas of finance, human resources, marketing and operations.

Students use a variety of technological, communication and analytical tools to comprehend, analyse, interpret and synthesise business data and information. They engage with the dynamic business world (in both national and global contexts), the changing workforce and emerging digital technologies.

Pathways

A course of study in Business can establish a basis for further education and employment in the fields of business management, business development, entrepreneurship, business analytics, economics, business law, accounting and finance, international business, marketing, human resources management and business information systems.

Objectives

By the conclusion of the course of study, students will:

- describe business environments and situations
- explain business concepts, strategies and processes
- select and analyse business data and information
- interpret business relationships, patterns and trends to draw conclusions
- evaluate business practices and strategies to make decisions and propose recommendations
- create responses that communicate meaning to suit purpose and audience.

Structure

Unit 1	Unit 2	Unit 3	Unit 4
Business creation <ul style="list-style-type: none"> Fundamentals of business Creation of business ideas 	Business growth <ul style="list-style-type: none"> Establishment of a business Entering markets 	Business diversification <ul style="list-style-type: none"> Competitive markets Strategic development 	Business evolution <ul style="list-style-type: none"> Repositioning a business Transformation of a business

Assessment

Schools devise assessments in Units 1 and 2 to suit their local context.

In Units 3 and 4 students complete *four* summative assessments. The results from each of the assessments are added together to provide a subject score out of 100. Students will also receive an overall subject result (A–E).

Summative assessments

Unit 3		Unit 4	
Summative internal assessment 1 (IA1): • Examination — combination response	25%	Summative internal assessment 3 (IA3): • Extended response — feasibility report	25%
Summative internal assessment 2 (IA2): • Investigation — business report	25%	Summative external assessment (EA): • Examination — combination response	25%
Finance			
Approximate Subject SRS Fee: \$85		No External Provider Fee	

Legal Studies focuses on the interaction between society and the discipline of law and explores the role and development of law in response to current issues. Students study the legal system and how it regulates activities and aims to protect the rights of individuals, while balancing these with obligations and responsibilities.

Students study the foundations of law, the criminal justice process and the civil justice system. They critically examine issues of governance, explore contemporary issues of law reform and change, and consider Australian and international human rights issues.

Students develop skills of inquiry, critical thinking, problem-solving and reasoning to make informed and ethical decisions and recommendations. They identify and describe legal issues, explore information and data, analyse, evaluate to make decisions or propose recommendations, and create responses that convey legal meaning. They question, explore and discuss tensions between changing social values, justice and equitable outcomes.

Pathways

A course of study in Legal Studies can establish a basis for further education and employment in the fields of law, law enforcement, criminology, justice studies and politics. The knowledge, skills and attitudes students gain are transferable to all discipline areas and post-schooling tertiary pathways. The research and analytical skills this course develops are universally valued in business, health, science and engineering industries.

Objectives

By the conclusion of the course of study, students will:

- comprehend legal concepts, principles and processes
- select legal information from sources
- analyse legal issues
- evaluate legal situations
- create responses that communicate meaning.

Structure

Unit 1	Unit 2	Unit 3	Unit 4
Beyond reasonable doubt <ul style="list-style-type: none"> • Legal foundations • Criminal investigation process • Criminal trial process • Punishment and sentencing 	Balance of probabilities <ul style="list-style-type: none"> • Civil law foundations • Contractual obligations • Negligence and the duty of care 	Law, governance and change <ul style="list-style-type: none"> • Governance in Australia • Law reform within a dynamic society 	Human rights in legal contexts <ul style="list-style-type: none"> • Human rights • The effectiveness of international law • Human rights in Australian contexts

Assessment

Schools devise assessments in Units 1 and 2 to suit their local context.

In Units 3 and 4 students complete *four* summative assessments. The results from each of the assessments are added together to provide a subject score out of 100. Students will also receive an overall subject result (A–E).

Summative assessments

Unit 3		Unit 4	
Summative internal assessment 1 (IA1): • Examination — combination response	25%	Summative internal assessment 3 (IA3): • Investigation — argumentative essay	25%
Summative internal assessment 2 (IA2): • Investigation — inquiry report	25%	Summative external assessment (EA): • Examination — combination response	25%
Finance			
Approximate Subject SRS Fee: \$85		No External Provider Fee	

Japanese- Via Cairns Distance Education

General senior subject

General

Japanese provides students with the opportunity to reflect on their understanding of the Japanese language and the communities that use it, while also assisting in the effective negotiation of experiences and meaning across cultures and languages. Students participate in a range of interactions in which they exchange meaning, develop intercultural understanding and become active participants in understanding and constructing written, spoken and visual texts.

Students communicate with people from Japanese-speaking communities to understand the purpose and nature of language and to gain understanding of linguistic structures. They acquire language in social and cultural settings and communicate across a range of contexts for a variety of purposes.

Students experience and evaluate a range of different text types; reorganise their thinking to accommodate other linguistic and intercultural knowledge and textual conventions; and create texts for a range of contexts, purposes and audiences.

Pathways

A course of study in Japanese can establish a basis for further education and employment in many professions and industries, particularly those where the knowledge of an additional language and the intercultural understanding it encompasses could be of value, such as business, hospitality, law, science, technology, sociology and education.

Objectives

By the conclusion of the course of study, students will:

- comprehend Japanese to understand information, ideas, opinions and experiences
- identify tone, purpose, context and audience to infer meaning, values and attitudes
- analyse and evaluate information and ideas to draw conclusions and justify opinions, ideas and perspectives
- apply knowledge of Japanese language elements, structures and textual conventions to convey meaning appropriate to context, purpose, audience and cultural conventions
- structure, sequence and synthesise information to justify opinions, ideas and perspectives
- use strategies to maintain communication and exchange meaning in Japanese.

Structure

Unit 1	Unit 2	Unit 3	Unit 4
私の暮らし My world <ul style="list-style-type: none"> • Family/carers and friends • Lifestyle and leisure • Education 	私達のまわり Exploring our world <ul style="list-style-type: none"> • Travel • Technology and media • The contribution of Japanese culture to the world 	私達の社会 Our society <ul style="list-style-type: none"> • Roles and relationships • Socialising and connecting with my peers • Groups in society 	私の将来 My future <ul style="list-style-type: none"> • Finishing secondary school, plans and reflections • Responsibilities and moving on

Assessment

Schools devise assessments in Units 1 and 2 to suit their local context.

In Units 3 and 4 students complete four summative assessments. The results from each of the assessments are added together to provide a subject score out of 100. Students will also receive an overall subject result (A–E).

Summative assessments

Unit 3		Unit 4	
Summative internal assessment 1 (IA1): • Examination — short response	15%	Summative internal assessment 3 (IA3): • Extended response	30%
Summative internal assessment 2 (IA2): • Examination — combination response	30%	Summative external assessment (EA): • Examination — combination response	25%
Finance			
Approximate Subject SRS Fee: \$25		No External Provider Fee	

Essential Mathematics

Applied senior subject

Applied

Essential Mathematics' major domains are Number, Data, Location and time, Measurement and Finance.

Essential Mathematics benefits students because they develop skills that go beyond the traditional ideas of numeracy.

Students develop their conceptual understanding when they undertake tasks that require them to connect mathematical concepts, operations and relations. They learn to recognise definitions, rules and facts from everyday mathematics and data, and to calculate using appropriate mathematical processes.

Students interpret and use mathematics to make informed predictions and decisions about personal and financial priorities. This is achieved through an emphasis on estimation, problem-solving and reasoning, which develops students into thinking citizens.

Pathways

A course of study in Essential Mathematics can establish a basis for further education and employment in the fields of trade, industry, business and community services. Students learn within a practical context related to general employment and successful participation in society, drawing on the mathematics used by various professional and industry groups.

Objectives

By the conclusion of the course of study, students will:

- select, recall and use facts, rules, definitions and procedures drawn from Number, Data, Location and time, Measurement and Finance
- comprehend mathematical concepts and techniques drawn from Number, Data, Location and time, Measurement and Finance
- communicate using mathematical, statistical and everyday language and conventions
- evaluate the reasonableness of solutions
- justify procedures and decisions by explaining mathematical reasoning
- solve problems by applying mathematical concepts and techniques drawn from Number, Data, Location and time, Measurement and Finance.

Structure

Unit 1	Unit 2	Unit 3	Unit 4
Number, data and graphs <ul style="list-style-type: none"> Fundamental topic: Calculations Number Representing data Graphs 	Money, travel and data <ul style="list-style-type: none"> Fundamental topic: Calculations Managing money Time and motion Data collection 	Measurement, scales and data <ul style="list-style-type: none"> Fundamental topic: Calculations Measurement Scales, plans and models Summarising and comparing data 	Graphs, chance and loans <ul style="list-style-type: none"> Fundamental topic: Calculations Bivariate graphs Probability and relative frequencies Loans and compound interest

Assessment

Schools devise assessments in Units 1 and 2 to suit their local context.

In Units 3 and 4 students complete *four* summative assessments. Schools develop three summative internal assessments and the common internal assessment (CIA) is developed by the QCAA.

Summative assessments

Unit 3	Unit 4
Summative internal assessment 1 (IA1): <ul style="list-style-type: none"> Problem-solving and modelling task 	Summative internal assessment 3 (IA3): <ul style="list-style-type: none"> Problem-solving and modelling task
Summative internal assessment 2 (IA2): <ul style="list-style-type: none"> Common internal assessment (CIA) 	Summative internal assessment (IA4): <ul style="list-style-type: none"> Examination
Finance	
Approximate Subject SRS Fee: \$70	No External Provider Fee

General Mathematics

General senior subject

General

General Mathematics' major domains are Number and algebra, Measurement and geometry, Statistics, and Networks and matrices, building on the content of the P–10 Australian Curriculum.

General Mathematics is designed for students who want to extend their mathematical skills beyond Year 10 but whose future studies or employment pathways do not require calculus.

Students build on and develop key mathematical ideas, including rates and percentages, concepts from financial mathematics, linear and non-linear expressions, sequences, the use of matrices and networks to model and solve authentic problems, the use of trigonometry to find solutions to practical problems, and the exploration of real-world phenomena in statistics.

Students engage in a practical approach that equips learners for their needs as future citizens. They learn to ask appropriate questions, map out pathways, reason about complex solutions, set up models and communicate in different forms. They experience the relevance of mathematics to their daily lives, communities and cultural backgrounds. They develop the ability to understand, analyse and take action regarding social issues in their world.

Pathways

A course of study in General Mathematics can establish a basis for further education and employment in the fields of business, commerce, education, finance, IT, social science and the arts.

Objectives

By the conclusion of the course of study, students will:

- select, recall and use facts, rules, definitions and procedures drawn from Number and algebra, Measurement and geometry, Statistics, and Networks and matrices
- comprehend mathematical concepts and techniques drawn from Number and algebra, Measurement and geometry, Statistics, and Networks and matrices
- communicate using mathematical, statistical and everyday language and conventions
- evaluate the reasonableness of solutions
- justify procedures and decisions by explaining mathematical reasoning
- solve problems by applying mathematical concepts and techniques drawn from Number and algebra, Measurement and geometry, Statistics, and Networks and matrices.

Structure

Unit 1	Unit 2	Unit 3	Unit 4
Money, measurement and relations <ul style="list-style-type: none"> • Consumer arithmetic • Shape and measurement • Linear equations and their graphs 	Applied trigonometry, algebra, matrices and univariate data <ul style="list-style-type: none"> • Applications of trigonometry • Algebra and matrices • Univariate data analysis 	Bivariate data, sequences and change, and Earth geometry <ul style="list-style-type: none"> • Bivariate data analysis • Time series analysis • Growth and decay in sequences • Earth geometry and time zones 	Investing and networking <ul style="list-style-type: none"> • Loans, investments and annuities • Graphs and networks • Networks and decision mathematics

Assessment

Schools devise assessments in Units 1 and 2 to suit their local context.

In Units 3 and 4 students complete *four* summative assessments. The results from each of the assessments are added together to provide a subject score out of 100. Students will also receive an overall subject result (A–E).

Summative assessments

Unit 3		Unit 4	
Summative internal assessment 1 (IA1): • Problem-solving and modelling task	20%	Summative internal assessment 3 (IA3): • Examination	15%
Summative internal assessment 2 (IA2): • Examination	15%		
Summative external assessment (EA): 50% • Examination			
Finance			
Approximate Subject SRS Fee: \$70		No External Provider Fee	

Mathematical Methods

General senior subject

General

Mathematical Methods' major domains are Algebra, Functions, relations and their graphs, Calculus and Statistics.

Mathematical Methods enables students to see the connections between mathematics and other areas of the curriculum and apply their mathematical skills to real-world problems, becoming critical thinkers, innovators and problem-solvers.

Students learn topics that are developed systematically, with increasing levels of sophistication, complexity and connection, and build on algebra, functions and their graphs, and probability from the P–10 Australian Curriculum. Calculus is essential for developing an understanding of the physical world. The domain Statistics is used to describe and analyse phenomena involving uncertainty and variation. Both are the basis for developing effective models of the world and solving complex and abstract mathematical problems.

Students develop the ability to translate written, numerical, algebraic, symbolic and graphical information from one representation to another. They make complex use of factual knowledge to successfully formulate, represent and solve mathematical problems.

Pathways

A course of study in Mathematical Methods can establish a basis for further education and employment in the fields of natural and physical sciences (especially physics and chemistry), mathematics and science education, medical and health sciences (including human biology, biomedical science, nanoscience and forensics), engineering (including chemical, civil, electrical and mechanical engineering, avionics, communications and mining),

computer science (including electronics and software design), psychology and business.

Objectives

By the conclusion of the course of study, students will:

- select, recall and use facts, rules, definitions and procedures drawn from Algebra, Functions, relations and their graphs, Calculus and Statistics
- comprehend mathematical concepts and techniques drawn from Algebra, Functions, relations and their graphs, Calculus and Statistics
- communicate using mathematical, statistical and everyday language and conventions
- evaluate the reasonableness of solutions
- justify procedures and decisions by explaining mathematical reasoning
- solve problems by applying mathematical concepts and techniques drawn from Algebra, Functions, relations and their graphs, Calculus and Statistics.

Structure

Unit 1	Unit 2	Unit 3	Unit 4
Algebra, statistics and functions <ul style="list-style-type: none"> • Arithmetic and geometric sequences and series 1 • Functions and graphs • Counting and probability • Exponential functions 1 • Arithmetic and geometric sequences 	Calculus and further functions <ul style="list-style-type: none"> • Exponential functions 2 • The logarithmic function 1 • Trigonometric functions 1 • Introduction to differential calculus • Further differentiation and applications 1 • Discrete random variables 1 	Further calculus <ul style="list-style-type: none"> • The logarithmic function 2 • Further differentiation and applications 2 • Integrals 	Further functions and statistics <ul style="list-style-type: none"> • Further differentiation and applications 3 • Trigonometric functions 2 • Discrete random variables 2 • Continuous random variables and the normal distribution • Interval estimates for proportions

Assessment

Schools devise assessments in Units 1 and 2 to suit their local context.

In Units 3 and 4 students complete *four* summative assessments. The results from each of the assessments are added together to provide a subject score out of 100. Students will also receive an overall subject result (A–E).

Summative assessments

Unit 3		Unit 4	
Summative internal assessment 1 (IA1):	20%	Summative internal assessment 3 (IA3):	15%
• Problem-solving and modelling task		• Examination	
Summative internal assessment 2 (IA2):	15%		
• Examination			
Summative external assessment (EA): 50%			
• Examination			
Finance			
Approximate Subject SRS Fee: \$70		No External Provider Fee	

Specialist Mathematics

General senior subject

General

Specialist Mathematics' major domains are Vectors and matrices, Real and complex numbers, Trigonometry, Statistics and Calculus.

Specialist Mathematics is designed for students who develop confidence in their mathematical knowledge and ability, and gain a positive view of themselves as mathematics learners. They will gain an appreciation of the true nature of mathematics, its beauty and its power.

Students learn topics that are developed systematically, with increasing levels of sophistication, complexity and connection, building on functions, calculus, statistics from Mathematical Methods, while vectors, complex numbers and matrices are introduced. Functions and calculus are essential for creating models of the physical world. Statistics are used to describe and analyse phenomena involving probability, uncertainty and variation. Matrices, complex numbers and vectors are essential tools for explaining abstract or complex relationships that occur in scientific and technological endeavours.

Student learning experiences range from practising essential mathematical routines to developing procedural fluency, through to investigating scenarios, modelling the real world, solving problems and explaining reasoning.

Pathways

A course of study in Specialist Mathematics can establish a basis for further education and employment in the fields of science, all branches of mathematics and statistics,

computer science, medicine, engineering, finance and economics.

Objectives

By the conclusion of the course of study, students will:

- select, recall and use facts, rules, definitions and procedures drawn from Vectors and matrices, Real and complex numbers, Trigonometry, Statistics and Calculus
- comprehend mathematical concepts and techniques drawn from Vectors and matrices, Real and complex numbers, Trigonometry, Statistics and Calculus
- communicate using mathematical, statistical and everyday language and conventions
- evaluate the reasonableness of solutions
- justify procedures and decisions by explaining mathematical reasoning
- solve problems by applying mathematical concepts and techniques drawn from Vectors and matrices, Real and complex numbers, Trigonometry, Statistics and Calculus.

Structure

Specialist Mathematics is to be undertaken in conjunction with, or on completion of, Mathematical Methods.

Unit 1	Unit 2	Unit 3	Unit 4
Combinatorics, vectors and proof <ul style="list-style-type: none"> • Combinatorics • Vectors in the plane • Introduction to proof 	Complex numbers, trigonometry, functions and matrices <ul style="list-style-type: none"> • Complex numbers 1 • Trigonometry and functions • Matrices 	Mathematical induction, and further vectors, matrices and complex numbers <ul style="list-style-type: none"> • Proof by mathematical induction • Vectors and matrices • Complex numbers 2 	Further statistical and calculus inference <ul style="list-style-type: none"> • Integration and applications of integration • Rates of change and differential equations • Statistical inference

Assessment

Schools devise assessments in Units 1 and 2 to suit their local context.

In Units 3 and 4 students complete *four* summative assessments. The results from each of the assessments are added together to provide a subject score out of 100. Students will also receive an overall subject result (A–E).

Summative assessments

Unit 3		Unit 4	
Summative internal assessment 1 (IA1): • Problem-solving and modelling task	20%	Summative internal assessment 3 (IA3): • Examination	15%
Summative internal assessment 2 (IA2): • Examination	15%		
Summative external assessment (EA): 50% • Examination			
Finance			
Approximate Subject SRS Fee: \$70		No External Provider Fee	

Biology

General senior subject

General

Biology provides opportunities for students to engage with living systems.

Students develop their understanding of cells and multicellular organisms. They engage with the concept of maintaining the internal environment. They study biodiversity and the interconnectedness of life. This knowledge is linked with the concepts of heredity and the continuity of life.

Students learn and apply aspects of the knowledge and skills of the discipline (thinking, experimentation, problem-solving and research skills), understand how it works and how it may impact society. They develop their sense of wonder and curiosity about life; respect for all living things and the environment; understanding of biological systems, concepts, theories and models; appreciation of how biological knowledge has developed over time and continues to develop; a sense of how biological knowledge influences society.

Students plan and carry out fieldwork, laboratory and other research investigations; interpret evidence; use sound, evidence-based arguments creatively and analytically when evaluating claims and applying biological knowledge; and communicate biological understanding, findings, arguments and conclusions using appropriate representations, modes and genres.

Pathways

A course of study in Biology can establish a basis for further education and employment in the fields of medicine, forensics, veterinary, food and marine sciences, agriculture, biotechnology, environmental rehabilitation, biosecurity, quarantine, conservation and sustainability.

Objectives

By the conclusion of the course of study, students will:

- describe and explain scientific concepts, theories, models and systems and their limitations
- apply understanding of scientific concepts, theories, models and systems within their limitations
- analyse evidence
- interpret evidence
- investigate phenomena
- evaluate processes, claims and conclusions
- communicate understandings, findings, arguments and conclusions.

Structure

Unit 1	Unit 2	Unit 3	Unit 4
Cells and multicellular organisms <ul style="list-style-type: none"> Cells as the basis of life Multicellular organisms 	Maintaining the internal environment <ul style="list-style-type: none"> Homeostasis Infectious diseases 	Biodiversity and the interconnectedness of life <ul style="list-style-type: none"> Describing biodiversity Ecosystem dynamics 	Heredity and continuity of life <ul style="list-style-type: none"> DNA, genes and the continuity of life Continuity of life on Earth

Assessment

Schools devise assessments in Units 1 and 2 to suit their local context.

In Units 3 and 4 students complete *four* summative assessments. The results from each of the assessments are added together to provide a subject score out of 100. Students will also receive an overall subject result (A–E).

Summative assessments

Unit 3		Unit 4	
Summative internal assessment 1 (IA1): • Data test	10%	Summative internal assessment 3 (IA3): • Research investigation	20%
Summative internal assessment 2 (IA2): • Student experiment	20%		
Summative external assessment (EA): 50% • Examination			
Finance			
Approximate Subject SRS Fee: \$70 Approximate Excursion Cost: \$300		No External Provider Fee	

Chemistry

General senior subject

General

Chemistry is the study of materials and their properties and structure.

Students study atomic theory, chemical bonding, and the structure and properties of elements and compounds. They explore intermolecular forces, gases, aqueous solutions, acidity and rates of reaction. They study equilibrium processes and redox reactions. They explore organic chemistry, synthesis and design to examine the characteristic chemical properties and chemical reactions displayed by different classes of organic compounds.

Students develop their appreciation of chemistry and its usefulness; understanding of chemical theories, models and chemical systems; expertise in conducting scientific investigations. They critically evaluate and debate scientific arguments and claims in order to solve problems and generate informed, responsible and ethical conclusions, and communicate chemical understanding and findings through the use of appropriate representations, language and nomenclature.

Students learn and apply aspects of the knowledge and skills of the discipline (thinking, experimentation, problem-solving and research skills), understand how it works and how it may impact society.

Pathways

A course of study in Chemistry can establish a basis for further education and employment in the fields of forensic science,

environmental science, engineering, medicine, pharmacy and sports science.

Objectives

By the conclusion of the course of study, students will:

- describe and explain scientific concepts, theories, models and systems and their limitations
- apply understanding of scientific concepts, theories, models and systems within their limitations
- analyse evidence
- interpret evidence
- investigate phenomena
- evaluate processes, claims and conclusions
- communicate understandings, findings, arguments and conclusions.

Structure

Unit 1	Unit 2	Unit 3	Unit 4
Chemical fundamentals — structure, properties and reactions <ul style="list-style-type: none"> • Properties and structure of atoms • Properties and structure of materials • Chemical reactions — reactants, products and energy change 	Molecular interactions and reactions <ul style="list-style-type: none"> • Intermolecular forces and gases • Aqueous solutions and acidity • Rates of chemical reactions 	Equilibrium, acids and redox reactions <ul style="list-style-type: none"> • Chemical equilibrium systems • Oxidation and reduction 	Structure, synthesis and design <ul style="list-style-type: none"> • Properties and structure of organic materials • Chemical synthesis and design

Assessment

Schools devise assessments in Units 1 and 2 to suit their local context.

In Units 3 and 4 students complete *four* summative assessments. The results from each of the assessments are added together to provide a subject score out of 100. Students will also receive an overall subject result (A–E).

Summative assessments

Unit 3		Unit 4	
Summative internal assessment 1 (IA1): • Data test	10%	Summative internal assessment 3 (IA3): • Research investigation	20%
Summative internal assessment 2 (IA2): • Student experiment	20%		
Summative external assessment (EA): 50% • Examination			
Finance			
Approximate Subject SRS Fee: \$70		No External Provider Fee	

Physics

General senior subject

General

Physics provides opportunities for students to engage with classical and modern understandings of the universe.

Students learn about the fundamental concepts of thermodynamics, electricity and nuclear processes; and about the concepts and theories that predict and describe the linear motion of objects. Further, they explore how scientists explain some phenomena using an understanding of waves. They engage with the concept of gravitational and electromagnetic fields and the relevant forces associated with them. They study modern physics theories and models that, despite being counterintuitive, are fundamental to our understanding of many common observable phenomena.

Students develop appreciation of the contribution physics makes to society: understanding that diverse natural phenomena may be explained, analysed and predicted using concepts, models and theories that provide a reliable basis for action; and that matter and energy interact in physical systems across a range of scales. They understand how models and theories are refined, and new ones developed in physics; investigate phenomena and solve problems; collect and analyse data; and interpret evidence. Students use accurate and precise measurement, valid and reliable evidence, and scepticism and intellectual rigour to evaluate claims; and communicate physics understanding, findings, arguments and conclusions using appropriate representations, modes and genres.

Students learn and apply aspects of the knowledge and skills of the discipline (thinking, experimentation, problem-solving and research skills), understand how it works and how it may impact society.

Pathways

A course of study in Physics can establish a basis for further education and employment in the fields of science, engineering, medicine and technology.

Objectives

By the conclusion of the course of study, students will:

- describe and explain scientific concepts, theories, models and systems and their limitations
- apply understanding of scientific concepts, theories, models and systems within their limitations
- analyse evidence
- interpret evidence
- investigate phenomena
- evaluate processes, claims and conclusions
- communicate understandings, findings, arguments and conclusions.

Structure

Unit 1	Unit 2	Unit 3	Unit 4
Thermal, nuclear and electrical physics <ul style="list-style-type: none"> • Heating processes • Ionising radiation and nuclear reactions • Electrical circuits 	Linear motion and waves <ul style="list-style-type: none"> • Linear motion and force • Waves 	Gravity and electromagnetism <ul style="list-style-type: none"> • Gravity and motion • Electromagnetism 	Revolutions in modern physics <ul style="list-style-type: none"> • Special relativity • Quantum theory • The Standard Model

Assessment

Schools devise assessments in Units 1 and 2 to suit their local context.

In Units 3 and 4 students complete *four* summative assessments. The results from each of the assessments are added together to provide a subject score out of 100. Students will also receive an overall subject result (A–E).

Summative assessments

Unit 3		Unit 4	
Summative internal assessment 1 (IA1): • Data test	10%	Summative internal assessment 3 (IA3): • Research investigation	20%
Summative internal assessment 2 (IA2): • Student experiment	20%		
Summative external assessment (EA): 50% • Examination			
Finance			
Approximate Subject SRS Fee: \$70		No External Provider Fee	

Psychology provides opportunities for students to engage with concepts that explain behaviours and underlying cognitions.

Students examine individual development in the form of the role of the brain, cognitive development, human consciousness and sleep. They investigate the concept of intelligence; the process of diagnosis and how to classify psychological disorder and determine an effective treatment; and the contribution of emotion and motivation on individual behaviour. They examine individual thinking and how it is determined by the brain, including perception, memory, and learning. They consider the influence of others by examining theories of social psychology, interpersonal processes, attitudes and cross-cultural psychology.

Students learn and apply aspects of the knowledge and skill of the discipline (thinking, experimentation, problem-solving and research skills), understand how it works and how it may impact society.

Pathways

A course of study in Psychology can establish a basis for further education and employment in the fields of psychology, sales, human resourcing, training, social work, health, law, business, marketing and education.

Objectives

By the conclusion of the course of study, students will:

- describe and explain scientific concepts, theories, models and systems and their limitations
- apply understanding of scientific concepts, theories, models and systems within their limitations
- analyse evidence
- interpret evidence
- investigate phenomena
- evaluate processes, claims and conclusions
- communicates understandings, findings, arguments and conclusions.

Structure

Unit 1	Unit 2	Unit 3	Unit 4
Individual development <ul style="list-style-type: none"> Psychological science A The role of the brain Cognitive development Human consciousness and sleep 	Individual behaviour <ul style="list-style-type: none"> Psychological science B Intelligence Diagnosis Psychological disorders and treatments Emotion and motivation 	Individual thinking <ul style="list-style-type: none"> Localisation of function in the brain Visual perception Memory Learning 	The influence of others <ul style="list-style-type: none"> Social psychology Interpersonal processes Attitudes Cross-cultural psychology

Assessment

Schools devise assessments in Units 1 and 2 to suit their local context.

In Units 3 and 4 students complete *four* summative assessments. The results from each of the assessments are added together to provide a subject score out of 100. Students will also receive an overall subject result (A–E).

Summative assessments

Unit 3		Unit 4	
Summative internal assessment 1 (IA1): • Data test	10%	Summative internal assessment 3 (IA3): • Research investigation	20%
Summative internal assessment 2 (IA2): • Student experiment	20%		
Summative external assessment (EA): 50% • Examination			
Finance			
Approximate Subject SRS Fee: \$70		No External Provider Fee	

Technologies are an integral part of society as humans seek to create solutions to improve their own and others' quality of life. Technologies affect people and societies by transforming, restoring and sustaining the world in which we live. In an increasingly technological and complex world, it is important to develop the knowledge, understanding and skills associated with traditional and contemporary tools and materials used by the Australian manufacturing industry to produce products. The manufacturing industry transform raw materials into products wanted by society. This adds value for both enterprises and consumers. Australia has strong manufacturing industries that continue to provide employment opportunities.

Engineering Skills includes the study of the manufacturing and engineering industry's practices and production processes through students' application in, and through trade learning contexts. Industry practices are used by manufacturing enterprises to manage the manufacture of products from raw materials. Production processes combine the production skills and procedures required to produce products. Students engage in applied learning to demonstrate knowledge and skills in units that meet local needs, available resources and teacher expertise. Through both individual and collaborative learning experiences, students learn to meet customer expectations of product quality at a specific price and time.

Applied learning supports students' development of transferable 21st century, literacy and numeracy skills relevant to future employment opportunities in the structural, transport and manufacturing engineering industrial sectors. Students

learn to interpret drawings and technical information, and select and demonstrate safe practical production processes using hand and power tools, machinery and equipment. They communicate using oral, written and graphical modes, organise, calculate, plan, evaluate and adapt production processes and the products they produce. The majority of learning is done through manufacturing tasks that relate to business and industry. Students work with each other to solve problems and complete practical work.

Pathways

A course of study in Engineering Skills can establish a basis for further education and employment in engineering trades. With additional training and experience, potential employment opportunities may be found, for example, as a sheet metal worker, metal fabricator, welder, maintenance fitter, metal machinist, locksmith, air-conditioning mechanic, refrigeration mechanic or automotive mechanic.

Objectives

By the conclusion of the course of study, students should:

- demonstrate practices, skills and procedures
- interpret drawings and technical information
- select practices, skills and procedures
- sequence processes
- evaluate skills and procedures, and structures
- adapt plans, skills and procedures.

Structure

Engineering Skills is a four-unit course of study. This syllabus contains six QCAA-developed units as options for schools to select from to develop their course of study.

Unit option	Unit title
Unit option A	Fitting and machining
Unit option B	Welding and fabrication
Unit option C	Sheet metal working
Unit option D	Production in the structural engineering industry
Unit option E	Production in the transport engineering industry
Unit option F	Production in the manufacturing engineering industry

Assessment

Students complete two assessment tasks for each unit. The assessment techniques used in Engineering Skills are:

Technique	Description	Response requirements
Practical demonstration	Students perform a practical demonstration when manufacturing a unit context artefact and reflect on industry practices, and production skills and procedures.	Practical demonstration Practical demonstration: the skills and procedures used in 3–5 production processes Documentation Multimodal (at least two modes delivered at the same time): up to 3 minutes, 6 A4 pages, or equivalent digital media
Project	Students manufacture a unit context product that consists of multiple interconnected components and document the manufacturing process.	Product Product: 1 fitting and machining product manufactured using the skills and procedures in 5–7 production processes Manufacturing process Multimodal (at least two modes delivered at the same time): up to 5 minutes, 8 A4 pages, or equivalent digital media
Finance		
Approximate Subject SRS Fee: \$150		No External Provider Fee

Technologies are an integral part of society as humans seek to create solutions to improve their own and others' quality of life. Technologies affect people and societies by transforming, restoring and sustaining the world in which we live. In an increasingly technological and complex world, it is important to develop the knowledge, understanding and skills associated with traditional and contemporary tools and materials used by Australian manufacturing industries to produce products. The manufacturing industry transforms raw materials into products wanted by society. This adds value for both enterprises and consumers. Australia has strong manufacturing industries that continue to provide employment opportunities.

Furnishing Skills includes the study of the manufacturing and furnishing industry's practices and production processes through students' application in, and through trade learning contexts. Industry practices are used by furnishing enterprises to manage the manufacture of products from raw materials. Production processes combine the production skills and procedures required to produce products. Students engage in applied learning to demonstrate knowledge and skills in units that meet local needs, available resources and teacher expertise. Through both individual and collaborative learning experiences, students learn to meet customer expectations of product quality at a specific price and time.

Applied learning in manufacturing tasks supports students' development of transferable 21st century, literacy and numeracy skills relevant to future employment opportunities in the domestic, commercial and bespoke furnishing industries. Students learn to recognise and apply industry practices, interpret drawings and technical information and demonstrate

and apply safe practical production processes using hand/power tools and machinery. They communicate using oral, written and graphical modes, organise, calculate, plan, evaluate and adapt production processes and the products they produce. The majority of learning is done through manufacturing tasks that relate to business and industry. Students work with each other to solve problems and complete practical work.

Pathways

A course of study in Furnishing Skills can establish a basis for further education and employment in the furnishing industry. With additional training and experience, potential employment opportunities may be found in furnishing trades as, for example, a furniture-maker, wood machinist, cabinet-maker, polisher, shopfitter, upholsterer, furniture restorer, picture framer, floor finisher or glazier.

Objectives

By the conclusion of the course of study, students should:

- demonstrate practices, skills and procedures
- interpret drawings and technical information
- select practices, skills and procedures.
- sequence processes
- evaluate skills and procedures, and products
- adapt plans, skills and procedures.

Structure

Furnishing Skills is a four-unit course of study. This syllabus contains six QCAA-developed units as options for schools to select from to develop their course of study.

Unit option	Unit title
Unit option A	Furniture-making
Unit option B	Furniture-making
Unit option C	Interior furnishing
Unit option D	Production in the domestic furniture industry
Unit option E	Production in the commercial furniture industry
Unit option F	Production in the bespoke furniture industry

Assessment

Students complete two assessment tasks for each unit. The assessment techniques used in Furnishing Skills are:

Technique	Description	Response requirements
Practical demonstration	Students perform a practical demonstration when manufacturing a unit context artefact and reflect on industry practices, and production skills and procedures.	Practical demonstration Practical demonstration: the skills and procedures used in 3–5 production processes Documentation Multimodal (at least two modes delivered at the same time): up to 3 minutes, 6 A4 pages, or equivalent digital media
Project	Students manufacture a product and document the manufacturing process.	Product Product: 1 multi-material furniture product manufactured using the skills and procedures in 5–7 production processes Manufacturing process Multimodal (at least two modes delivered at the same time): up to 5 minutes, 8 A4 pages, or equivalent digital media
Finance		
Approximate Subject SRS Fee: \$120		No External Provider Fee

Technologies have been an integral part of society as humans seek to create solutions to improve their own and others' quality of life. Technologies affect people and societies by transforming, restoring and sustaining the world in which we live. The hospitality industry is important economically and socially in Australian society and is one of the largest employers in the country. It specialises in delivering products and services to customers and consists of different sectors, including food and beverage, accommodation, clubs and gaming. Hospitality offers a range of exciting and challenging long-term career opportunities across a range of businesses. The industry is dynamic and uses skills that are transferable across sectors and locations.

The Hospitality Practices syllabus emphasises the food and beverage sector, which includes food and beverage production and service. The subject includes the study of industry practices and production processes through real-world related application in the hospitality industry context. Production processes combine the production skills and procedures required to implement hospitality events. Students engage in applied learning to recognise, apply and demonstrate knowledge and skills in units that meet local needs, available resources and teacher expertise. Through both individual and collaborative learning experiences, students learn to perform production and service skills, and meet customer expectations of quality in event contexts.

Applied learning hospitality tasks supports student development of transferable 21st century, literacy and numeracy skills relevant to the hospitality industry and future employment opportunities. Students learn to

recognise and apply industry practices; interpret briefs and specifications; demonstrate and apply safe practical production processes; communicate using oral, written and spoken modes; develop personal attributes that contribute to employability; and organise, plan, evaluate and adapt production processes for the events they implement. The majority of learning is done through hospitality tasks that relate to industry and that promote adaptable, competent, self-motivated and safe individuals who can work with colleagues to solve problems and complete practical work.

Pathways

A course of study in Hospitality Practices can establish a basis for further education and employment in the hospitality sectors of food and beverage, catering, accommodation and entertainment. Students could pursue further studies in hospitality, hotel, event and tourism or business management, which allows for specialisation.

Objectives

By the conclusion of the course of study, students should:

- demonstrate practices, skills and processes
- interpret briefs
- select practices, skills and procedures
- sequence processes
- evaluate skills, procedures and products
- adapt production plans, techniques and procedures.

Structure

Hospitality Practices is a four-unit course of study. This syllabus contains six QCAA-developed units as options for schools to select from to develop their course of study.

Unit option	Unit title
Unit option A	Culinary trends
Unit option B	Bar and barista basics
Unit option C	In-house dining
Unit option D	Casual dining
Unit option E	Formal dining
Unit option F	Guest services

Assessment

Students complete two assessment tasks for each unit. The assessment techniques used in Hospitality Practices are:

Technique	Description	Response requirements
Practical demonstration	Students produce and present an item related to the unit context in response to a brief.	Practical demonstration Practical demonstration: menu item Planning and evaluation Multimodal (at least two modes delivered at the same time): up to 5 minutes, 8 A4 pages, or equivalent digital media
Project	Students plan and deliver an event incorporating the unit context in response to a brief.	Practical demonstration Practical demonstration: delivery of event Planning and evaluation Multimodal (at least two modes delivered at the same time): up to 5 minutes, 8 A4 pages, or equivalent digital media
Investigation	Students investigate and evaluate practices, skills and processes.	Investigation and evaluation One of the following: <ul style="list-style-type: none"> • Multimodal (at least two modes delivered at the same time): up to 7 minutes, 10 A4 pages, or equivalent digital media • Written: up to 1000 words
Finance		
Approximate Subject SRS Fee: \$140		No External Provider Fee

Technologies are an integral part of society as humans seek to create solutions to improve their own and others' quality of life. Technologies affect people and societies by transforming, restoring and sustaining the world in which we live. In an increasingly technological and complex world, it is important to develop the knowledge, understanding and skills associated with information technology to support a growing need for digital literacy and specialist information and communication technology skills in the workforce. Across business, industry, government, education and leisure sectors, rapidly changing industry practices and processes create corresponding vocational opportunities in Australia and around the world.

Information & Communication Technology includes the study of industry practices and ICT processes through students' application in and through a variety of industry-related learning contexts. Industry practices are used by enterprises to manage ICT product development processes to ensure high-quality outcomes, with alignment to relevant local and universal standards and requirements. Students engage in applied learning to demonstrate knowledge, understanding and skills in units that meet local needs, available resources and teacher expertise. Through both individual and collaborative learning experiences, students learn to meet client expectations and product specifications.

Applied learning supports students' development of transferable 21st century, literacy and numeracy skills relevant to information and communication technology sectors and future employment opportunities. Students learn to interpret

client briefs and technical information, and select and demonstrate skills using hardware and software to develop ICT products. The majority of learning is done through prototyping tasks that relate to business and industry, and that promote adaptable, competent, self-motivated and safe individuals who can work with colleagues to solve problems and complete practical work.

Pathways

A course of study in Information & Communication Technology can establish a basis for further education and employment in many fields, especially the fields of ICT operations, help desk, sales support, digital media support, office administration, records and data management, and call centres.

Objectives

By the conclusion of the course of study, students should:

- demonstrate practices, skills and processes
- interpret client briefs and technical information
- select practices and processes
- sequence processes
- evaluate processes and products
- adapt processes and products.

Structure

Information & Communication Technology is a four-unit course of study. This syllabus contains six QCAA-developed units as options for schools to select from to develop their course of study.

Unit option	Unit title
Unit option A	Robotics
Unit option B	App development
Unit option C	Audio and video production
Unit option D	Layout and publishing
Unit option E	Digital imaging and modelling
Unit option F	Web development

Assessment

Students complete two assessment tasks for each unit. The assessment techniques used in Information & Communication Technology are:

Technique	Description	Response requirements
Product proposal	Students produce a prototype for a product proposal in response to a client brief and technical information.	Multimodal (at least two modes delivered at the same time): up to 3 minutes, 6 A4 pages, or equivalent digital media
Project	Students produce a product prototype in response to a client brief and technical information.	Multimodal (at least two modes delivered at the same time): up to 5 minutes, 8 A4 pages, or equivalent digital media that includes a demonstration of the product prototype
Finance		
Approximate Subject SRS Fee: \$40		No External Provider Fee

Engineering includes the study of mechanics, materials science and control technologies through real-world engineering contexts where students engage in problem-based learning.

Students learn to explore complex, open-ended problems and develop engineered solutions. They recognise and describe engineering problems, determine solution success criteria, develop and communicate ideas and predict, generate, evaluate and refine prototype solutions.

Students justify their decision-making and acknowledge the societal, economic and environmental sustainability of their engineered solutions. The problem-based learning framework in Engineering encourages students to become self-directed learners and develop beneficial collaboration and management skills.

Pathways

A course of study in Engineering can establish a basis for further education and employment in the field of engineering, including, but not limited to, civil, mechanical, mechatronic, electrical, aerospace, mining, process, chemical, marine, biomedical, telecommunications, environmental, micro-nano and systems. The study of engineering will also benefit students wishing to pursue post-school tertiary pathways that lead to careers in architecture, project management, aviation, surveying and spatial sciences.

Objectives

By the conclusion of the course of study, students will:

- recognise and describe engineering problems, concepts and principles
- symbolise and explain ideas and solutions
- analyse problems and information
- determine solution success criteria for engineering problems
- synthesise information and ideas to predict possible solutions
- generate prototype solutions to provide data to assess the accuracy of predictions
- evaluate and refine ideas and solutions to make justified recommendations
- make decisions about and use mode-appropriate features, language and conventions for particular purposes and contexts.

Structure

Unit 1	Unit 2	Unit 3	Unit 4
Engineering fundamentals and society <ul style="list-style-type: none"> • Engineering history • The problem-solving process in Engineering • Engineering communication • Introduction to engineering mechanics • Introduction to engineering materials 	Emerging technologies <ul style="list-style-type: none"> • Emerging needs • Emerging processes and machinery • Emerging materials • Exploring autonomy 	Statics of structures and environmental considerations <ul style="list-style-type: none"> • Application of the problem-solving process in Engineering • Civil structures and the environment • Civil structures, materials and forces 	Machines and mechanisms <ul style="list-style-type: none"> • Machines in society • Materials • Machine control

Assessment

Schools devise assessments in Units 1 and 2 to suit their local context.

In Units 3 and 4 students complete *four* summative assessments. The results from each of the assessments are added together to provide a subject score out of 100. Students will also receive an overall subject result (A–E).

Summative assessments

Unit 3		Unit 4	
Summative internal assessment 1 (IA1): • Project — folio	25%	Summative internal assessment 3 (IA3): • Project — folio	25%
Summative internal assessment 2 (IA2): • Examination	25%	Summative external assessment (EA): • Examination	25%
Finance			
Approximate Subject SRS Fee: \$70		No External Provider Fee	

Drama in Practice

Applied senior subject

Applied

The arts are woven into the fabric of community. They have the capacity to engage and inspire students, enriching their lives, stimulating curiosity and imagination, and encouraging them to reach their creative and expressive potential. Arts subjects provide opportunities for students to learn problem-solving processes, design and create art, and use multiple literacies to communicate intention with diverse audiences.

Drama exists wherever people present their experiences, ideas and feelings through re-enacted stories. From ancient origins in ritual and ceremony to contemporary live and mediated presentation in formal and informal theatre spaces, drama gives expression to our sense of self, our desires, our relationships and our aspirations. Whether the purpose is to entertain, celebrate or educate, engaging in drama enables students to experience, reflect on, communicate and appreciate different perspectives of themselves, others and the world they live in.

Drama in Practice gives students opportunities to make and respond to drama by planning, creating, adapting, producing, performing, interpreting and evaluating a range of drama works or events in a variety of settings. A key focus of this syllabus is engaging with school and/or local community contexts and, where possible, interacting with practising artists. Learning is connected to relevant industry practice and opportunities, promoting future employment and preparing students as agile, competent, innovative and safe workers, who can work collaboratively to solve problems and complete project-based work in various contexts.

As students gain practical experience in a number of onstage and offstage roles, they recognise the role drama plays and value the contribution it makes to the social and cultural lives of local, national and international communities.

Students participate in learning experiences in which they apply knowledge and develop creative and technical skills in communicating ideas and intention to an audience. They also learn essential workplace health and safety procedures relevant to the drama and theatre industry, as well as effective work practices and industry skills needed by a drama practitioner. Individually and in groups, where possible, they shape and express dramatic ideas of personal and social significance that serve particular purposes and contexts. They identify and follow creative and technical processes from conception to realisation, which foster cooperation and creativity, and help students to develop problem-solving skills and gain confidence and resilience.

Pathways

A course of study in Drama in Practice can establish a basis for further education and employment in the drama and theatre industry in areas such as performance, theatre management and promotions.

Objectives

By the conclusion of the course of study, students should:

- use drama practices
- plan drama works
- communicate ideas
- evaluate drama works.

Structure

Drama in Practice is a four-unit course of study. This syllabus contains four QCAA-developed units as options for schools to combine in any order to develop their course of study.

Unit option	Unit title
Unit option A	Collaboration
Unit option B	Community
Unit option C	Contemporary
Unit option D	Commentary

Assessment

Students complete two assessment tasks for each unit. The assessment techniques used in Drama in Practice are:

Technique	Description	Response requirements
Devising project	Students plan, devise and evaluate a scene for a focus of the unit.	Devised scene Up to 4 minutes (rehearsed) Planning and evaluation of devised scene One of the following: <ul style="list-style-type: none"> • Multimodal (at least two modes delivered at the same time): up to 5 minutes, 8 A4 pages, or equivalent digital media • Written: up to 600 words • Spoken: up to 4 minutes, or signed equivalent
Directorial project	Students plan, make and evaluate a director's brief for an excerpt of a published script for the focus of the unit.	Director's brief Multimodal (at least two modes delivered at the same time): up to 5 minutes, 8 A4 pages, or equivalent digital media Planning and evaluation of the director's brief One of the following: <ul style="list-style-type: none"> • Multimodal (at least two modes delivered at the same time): up to 5 minutes, 8 A4 pages, or equivalent digital media • Written: up to 600 words • Spoken: up to 4 minutes, or signed equivalent
Performance	Students perform the excerpt of the published script, a devised scene, or collage drama for the focus of the unit.	Performance Performance (live or recorded): up to 4 minutes
Finance		
Approximate Subject SRS Fee: \$50 Approximate Excursion Cost \$80		No External Provider Fee

The arts are woven into the fabric of community. They have the capacity to engage and inspire students, enriching their lives, stimulating curiosity and imagination, and encouraging them to reach their creative and expressive potential. Arts subjects provide opportunities for students to learn problem-solving processes, design and create art, and use multiple literacies to communicate intention with diverse audiences.

Music is a unique aural art form that uses sound and silence as a means of personal expression. It is a powerful medium because it affects a wide range of human activities, including personal, social, cultural and entertainment pursuits. Making music, becoming part of music and arts communities, and interacting with practising musicians and artists nurtures students' creative thinking and problem-solving skills as they follow processes from conception to realisation and express music ideas of personal significance. The discipline and commitment required in music-making provides students with opportunities for personal growth and development of lifelong learning skills. Learning is connected to relevant industry practice and opportunities, promoting future employment and preparing students as agile, competent, innovative and safe workers, who can work collaboratively to solve problems and complete project-based work in various contexts.

In Music in Practice, students are involved in making (composing and performing) and responding by exploring and engaging with music practices in class, school and the community. They gain practical, technical and listening skills and make choices to communicate through their music. Through

music activities, students have opportunities to engage individually and in groups to express music ideas that serve purposes and contexts. This fosters creativity, helps students develop problem-solving skills, and heightens their imaginative, emotional, aesthetic, analytical and reflective experiences.

Students learn about workplace health and safety issues relevant to the music industry and effective work practices that foster a positive work ethic, the ability to work as part of a team, and project management skills. They are exposed to authentic music practices that reflect the real-world practices of composers, performers, and audiences. They learn to view the world from different perspectives, experiment with different ways of sharing ideas and feelings, gain confidence and self-esteem, and contribute to the social and cultural lives of their school and local community.

Pathways

A course of study in Music in Practice can establish a basis for further education and employment in areas such as performance, critical listening, music management and music promotions.

Objectives

By the conclusion of the course of study, students should:

- use music practices
- plan music works
- communicate ideas
- evaluate music works.

Structure

Music in Practice is a four-unit course of study. This syllabus contains four QCAA-developed units as options for schools to combine in any order to develop their course of study.

Unit option	Unit title
Unit option A	Music of today
Unit option B	The cutting edge
Unit option C	Building your brand
Unit option D	'Live' on stage!

Assessment

Students complete two assessment tasks for each unit. The assessment techniques used in Music in Practice are:

Technique	Description	Response requirements
Composition	Students use music technology and production techniques to make a composition relevant to the unit focus.	Composition Composition: up to 3 minutes, or equivalent section of a larger work
Performance	Students perform music that is relevant to the unit focus.	Performance Performance (live or recorded): up to 4 minutes
Project	Students plan, make and evaluate a composition or performance relevant to the unit focus.	Composition Composition: up to 3 minutes, or equivalent section of a larger work OR Performance Performance (live or recorded): up to 4 minutes AND Planning and evaluation of composition or performance One of the following: <ul style="list-style-type: none"> • Multimodal (at least two modes delivered at the same time): up to 5 minutes, 8 A4 pages, or equivalent digital media • Written: up to 600 words • Spoken: up to 4 minutes, or signed equivalent
Finance- Per year		
Approximate Subject SRS Fee: \$50 Approximate Excursion Cost: \$80		No External Provider Fee

Visual Arts in Practice

Applied senior subject

Applied

The arts are woven into the fabric of community. They have the capacity to engage and inspire students, enriching their lives, stimulating curiosity and imagination, and encouraging them to reach their creative and expressive potential. Arts subjects provide opportunities for students to learn problem-solving processes, design and create art, and use multiple literacies to communicate intention with diverse audiences.

In Visual Arts in Practice, students respond to authentic, real-world stimulus (e.g. problems, events, stories, places, objects, the work of artists or artisans), seeing or making new links between art-making purposes and contexts. They explore visual language in combination with media, technologies and skills to make artworks. Throughout the course, students are exposed to two or more art-making modes, selecting from 2D, 3D, digital (static) and time-based and using these in isolation or combination, as well as innovating new ways of working.

When responding, students use analytical processes to identify problems and develop plans or designs for artworks. They use reasoning and decision-making to justify their choices, reflecting and evaluating on the success of their own and others' art-making. When making, students demonstrate knowledge and understanding of visual features to communicate artistic intention. They develop competency with

and independent selection of media, technologies and skills as they make experimental and resolved artworks, synthesising ideas developed throughout the responding phase.

Learning is connected to relevant industry practice and opportunities, promoting future employment and preparing students as agile, competent, innovative and safe workers who can work collaboratively to solve problems and complete project-based work in various contexts.

Pathways

A course of study in Visual Arts in Practice can establish a basis for further education and employment in a range of fields, including design, styling, decorating, illustrating, drafting, visual merchandising, make-up artistry, advertising, game design, photography, animation or ceramics.

Objectives

By the conclusion of the course of study, students should:

- use visual arts practices
- plan artworks
- communicate ideas
- evaluate artworks.

Structure

Visual Arts in Practice is a four-unit course of study. This syllabus contains four QCAA-developed units as options for schools to combine in any order to develop their course of study.

Unit option	Unit title
Unit option A	Looking inwards (self)
Unit option B	Looking outwards (others)
Unit option C	Clients
Unit option D	Transform & extend

Assessment

Students complete two assessment tasks for each unit. The assessment techniques used in Visual Arts in Practice are:

Technique	Description	Response requirements
Project	Students make artwork, design proposals and stylistic experiments. They evaluate artworks, art style and/or practices that explore the focus of the unit. Students plan resolved artworks.	<p>Experimental folio Up to 8 experimental artworks: 2D, 3D, digital (static) and/or time-based (up to 30 seconds)</p> <p>OR</p> <p>Prototype artwork One of the following:</p> <ul style="list-style-type: none"> • 2D, 3D, digital (static): up to 4 artwork/s • Time-based: up to 3 minutes <p>OR</p> <p>Design proposal Multimodal (at least two modes delivered at the same time): up to 5 minutes, 8 A4 pages, or equivalent digital media, including up to 4 prototype artwork/s — 2D, 3D, digital (static) and/or time-based (up to 30 seconds each)</p> <p>OR</p> <p>Folio of stylistic experiments Up to 8 experimental artworks: 2D, 3D, digital (static) and/or time-based (up to 30 seconds)</p> <p>AND</p> <p>Planning and evaluations One of the following:</p> <ul style="list-style-type: none"> • Multimodal (at least two modes delivered at the same time): up to 5 minutes, 8 A4 pages, or equivalent digital media • Written: up to 600 words • Spoken: up to 4 minutes, or signed equivalent
Resolved artwork	Students make a resolved artwork that communicates and/or addresses the focus of the unit.	<p>Resolved artwork One of the following:</p> <ul style="list-style-type: none"> • 2D, 3D, digital (static): up to 4 artwork/s • Time-based: up to 3 minutes

Finance-Per year	
Approximate Subject SRS Fee: \$100 Approximate Excursion Cost: \$80	No External Provider Fee

Drama

General senior subject

General

Drama fosters creative and expressive communication. It interrogates the human experience by investigating, communicating and embodying stories, experiences, emotions and ideas that reflect the human experience. It engages students in imaginative meaning-making processes and involves them using a range of artistic skills as they make and respond to dramatic works.

Students experience, reflect on, understand, communicate, collaborate and appreciate different perspectives of themselves, others and the world in which they live. They learn about the dramatic languages and how these contribute to the creation, interpretation and critique of dramatic action and meaning for a range of purposes. They study a range of forms, styles and their conventions in a variety of inherited traditions, current practice and emerging trends, including those from different cultures and contexts.

Students learn how to engage with dramatic works as both artists and audience through the use of critical literacies. The study of drama develops students' knowledge, skills and understanding in the making of and responding to dramatic works to help them realise their creative and expressive potential as individuals. Students learn to pose and solve problems, and work independently and collaboratively.

Pathways

A course of study in Drama can establish a basis for further education and employment in the field of drama, and to broader areas in creative industries and cultural institutions, including arts administration and management, communication, education, public relations, research and science and technology.

Objectives

By the conclusion of the course of study, students will:

- demonstrate an understanding of dramatic languages
- apply literacy skills
- apply and structure dramatic languages
- analyse how dramatic languages are used to create dramatic action and meaning
- interpret purpose, context and text to communicate dramatic meaning
- manipulate dramatic languages to create dramatic action and meaning
- evaluate and justify the use of dramatic languages to communicate dramatic meaning
- synthesise and argue a position about dramatic action and meaning.

Structure

Unit 1	Unit 2	Unit 3	Unit 4
Share How does drama promote shared understandings of the human experience? <ul style="list-style-type: none"> • cultural inheritances of storytelling • oral history and emerging practices • a range of linear and non-linear forms 	Reflect How is drama shaped to reflect lived experience? <ul style="list-style-type: none"> • Realism, including Magical Realism, Australian Gothic • associated conventions of styles and texts 	Challenge How can we use drama to challenge our understanding of humanity? <ul style="list-style-type: none"> • Theatre of Social Comment, including Theatre of the Absurd and Epic Theatre • associated conventions of styles and texts 	Transform How can you transform dramatic practice? <ul style="list-style-type: none"> • Contemporary performance • associated conventions of styles and texts • inherited texts as stimulus

Assessment

Schools devise assessments in Units 1 and 2 to suit their local context.

In Units 3 and 4 students complete *four* summative assessments. The results from each of the assessments are added together to provide a subject score out of 100. Students will also receive an overall subject result (A–E).

Summative assessments

Unit 3		Unit 4	
Summative internal assessment 1 (IA1): • Performance	20%	Summative internal assessment 3 (IA3): • Project — practice-led project	35%
Summative internal assessment 2 (IA2): • Project — dramatic concept	20%		
Summative external assessment (EA): 25% • Examination — extended response			
Finance			
Approximate Subject SRS Fee: \$50 Approximate Excursion Cost: \$80		No External Provider Fee	

Music

General senior subject

General

Music fosters creative and expressive communication. It allows students to develop musicianship through making (composition and performance) and responding (musicology).

Through composition, performance and musicology, students use and apply music elements and concepts. They apply their knowledge and understanding to convey meaning and/or emotion to an audience.

Students use essential literacy skills to engage in a multimodal world. They demonstrate practical music skills, and analyse and evaluate music in a variety of contexts, styles and genres.

Pathways

A course of study in Music can establish a basis for further education and employment in the fields such as arts administration and management, music journalism, arts/music education, creative and performance industries, music/media advertising, music and voice therapy, music/entertainment law, and the recording industry.

Objectives

By the conclusion of the course of study, students will:

- demonstrate technical skills
- explain the use of music elements and concepts
- use music elements and concepts
- analyse music
- apply compositional devices
- apply literacy skills
- interpret music elements and concepts
- evaluate music to justify the use of music elements and concepts
- realise music ideas
- resolve music ideas.

Structure

Unit 1	Unit 2	Unit 3	Unit 4
Designs Through inquiry learning, the following is explored: How does the treatment and combination of different music elements enable musicians to design music that communicates meaning through performance and composition?	Identities Through inquiry learning, the following is explored: How do musicians use their understanding of music elements, concepts and practices to communicate cultural, political, social and personal identities when performing, composing and responding to music?	Innovations Through inquiry learning, the following is explored: How do musicians incorporate innovative music practices to communicate meaning when performing and composing?	Narratives Through inquiry learning, the following is explored: How do musicians manipulate music elements to communicate narrative when performing, composing and responding to music?

Assessment

Schools devise assessments in Units 1 and 2 to suit their local context.

In Units 3 and 4 students complete *four* summative assessments. The results from each of the assessments are added together to provide a subject score out of 100. Students will also receive an overall subject result (A–E).

Summative assessments

Unit 3		Unit 4	
Summative internal assessment 1 (IA1): <ul style="list-style-type: none">• Performance	20%	Summative internal assessment 3 (IA3): <ul style="list-style-type: none">• Integrated project	35%
Summative internal assessment 2 (IA2): <ul style="list-style-type: none">• Composition	20%		
Summative external assessment (EA): 25% <ul style="list-style-type: none">• Examination			
Finance			
Approximate Subject SRS Fee: \$50 Approximate Excursion Cost: \$80		No External Provider Fee	

Visual Art

General senior subject

General

Visual Art provides students with opportunities to understand and appreciate the role of visual art in past and present traditions and cultures, as well as the contributions of contemporary visual artists and their aesthetic, historical and cultural influences. Students interact with artists, artworks, institutions and communities to enrich their experiences and understandings of their own and others' art practices.

Students have opportunities to construct knowledge and communicate personal interpretations by working as both artist and audience. They use their imagination and creativity to innovatively solve problems and experiment with visual language and expression.

Through an inquiry learning model, students develop critical and creative thinking skills. They create individualised responses and meaning by applying diverse materials, techniques, technologies and art processes.

In responding to artworks, students employ essential literacy skills to investigate artistic expression and critically analyse artworks in diverse contexts. They consider meaning, purposes and theoretical approaches when ascribing aesthetic value and challenging ideas.

Pathways

A course of study in Visual Art can establish a basis for further education and employment in the fields of arts practice, design, craft, and information technologies; broader areas in creative industries and cultural institutions; and diverse fields that use skills inherent in the subject, including advertising, arts administration and management, communication, design, education, galleries and museums, film and television, public relations, and science and technology.

Objectives

By the conclusion of the course of study, students will:

- implement ideas and representations
- apply literacy skills
- analyse and interpret visual language, expression and meaning in artworks and practices
- evaluate art practices, traditions, cultures and theories
- justify viewpoints
- experiment in response to stimulus
- create meaning through the knowledge and understanding of materials, techniques, technologies and art processes
- realise responses to communicate meaning.

Structure

Unit 1	Unit 2	Unit 3	Unit 4
Art as lens Through inquiry learning, the following are explored: <ul style="list-style-type: none"> • Concept: lenses to explore the material world • Contexts: personal and contemporary • Focus: People, place, objects • Media: 2D, 3D, and time-based 	Art as code Through inquiry learning, the following are explored: <ul style="list-style-type: none"> • Concept: art as a coded visual language • Contexts: formal and cultural • Focus: Codes, symbols, signs and art conventions • Media: 2D, 3D, and time-based 	Art as knowledge Through inquiry learning, the following are explored: <ul style="list-style-type: none"> • Concept: constructing knowledge as artist and audience • Contexts: contemporary, personal, cultural and/or formal • Focus: student-directed • Media: student-directed 	Art as alternate Through inquiry learning, the following are explored: <ul style="list-style-type: none"> • Concept: evolving alternate representations and meaning • Contexts: contemporary and personal, cultural and/or formal • Focus: continued exploration of Unit 3 student-directed focus • Media: student-directed

Assessment

Schools devise assessments in Units 1 and 2 to suit their local context.

In Units 3 and 4 students complete *four* summative assessments. The results from each of the assessments are added together to provide a subject score out of 100. Students will also receive an overall subject result (A–E).

Summative assessments

Unit 3		Unit 4	
Summative internal assessment 1 (IA1): • Investigation — inquiry phase 1	15%	Summative internal assessment 3 (IA3): • Project — inquiry phase 3	35%
Summative internal assessment 2 (IA2): • Project — inquiry phase 2	25%		
Summative external assessment (EA): 25% • Examination			

Finance	
Approximate Subject SRS Fee: \$100 Approximate Excursion Cost: \$80	No External Provider Fee

Vocational Education and Training Certificates Qualifications

Certificate Offerings – Sunshine Coast Technical Trade Training College

Students wishing to access these certificate qualifications must work through the application and enrolment process to be accepted into these courses.

Certificate II in Automotive Vocational Preparation (AUR20720)

Prepare for your career in the automotive industry with this entry-level course.

In this course you will gain the basic skills and knowledge required to carry out workplace tasks safely and effectively. You will become familiar with electrical and mechanical components and systems, and will learn how to use appropriate tools and equipment to complete basic removal, inspection and refitting of automotive components.

Young people considering a career as an apprentice or trainee in the automotive field will develop related skills within this course.

It may also assist in gaining employment in:

- underbody repair
- tyre and brake front end specialist
- auto electrical, outboard, motor or motorbike mechanic
- spare part sales
- general automotive repairs
- entry into the armed forces.

Focus is on general automotive servicing and environmental and sustainable best practices in the workplace.

Duration: 12 months including 80 hours structured workplace learning (SWL).

Completion requirements: This qualification will be granted when competency is demonstrated and achieved in a minimum of 12 units as described in the [automotive information sheet \(PDF, 624KB\)](#).

Certificate III in Aviation (REMOTE PILOT) AVI30419

This qualification prepares you for a role as a licenced drone pilot and will provide you with the skills, knowledge and licences to operate commercially. This could be for your own business, working for a company or working for one of many government departments that are utilising drones.

The course is also an excellent entry point into the aviation industry as you will be learning the same subjects that pilots of manned aircraft in airlines and the military learn.

The course is a mix of theory and practical flying to ensure you have the skills and knowledge to be employed as a drone pilot in a full time or part time role.

Upon successful completion of the entry level course Certificate III in Aviation (REMOTE PILOT) AVI30419, there are a number of career pathways from this qualification including photography / cinematography, public safety and emergency services, aerial surveying, mining and resource sectors, Federal, State and Local Government agencies and specialist civil and military roles.

This qualification is for candidates new to aviation and remote piloting. It will require a mix of practical and theoretical skills to be able to meet the requirements. Students need to be self disciplined and be able to follow instructions.

Further details regarding this program are outlined in the [Certificate III Aviation \(Remote Pilot\) AVI30419 information sheet \(PDF, 3.78MB\)](#).

CQUniversity Start Uni Now (SUN) Aviation Program

SUN is a CQ University initiative which allows students in Years 11 and 12 the opportunity to study first year university units while still in high school. As well as gaining valuable insight into university life, students will also be eligible for a number of other benefits:

- Direct entry: Students may be eligible to apply for direct entry into their chosen bachelor course on completion of high school.
- Financial savings: Students can undertake their first SUN unit at no cost. Unit fees for subsequent units are significantly reduced compared to the fee paid as an undergraduate student.
- QCE points: Students who successfully complete their SUN unit will be eligible for additional points towards their Queensland Certificate of Education (QCE).
- Credit transfers: Gain credit for each SUN unit completed toward the Bachelor of Building Design and reduce the number of units to be studied post high school.

Students who participate in the Aviation Studies Program will study two of CQU's aviation subjects.

Basic Aeronautical Knowledge (Term 1)

This unit (AVAT11002) provides students with:

- basic aeronautical knowledge of small general aviation aircraft
- knowledge of aerodynamics and aircraft power plants and systems.

Students also cover aeronautical knowledge requirements of the Civil Aviation Safety Authority Syllabus, which is applicable to the Recreational Pilot Licence.

Unmanned Aerial Vehicles (Term 2)

This unit (AVAT11004) provides students with information on the practical use and implementation of Unmanned Aerial Vehicles (UAVs). Students will learn about the historical, current and future developments of UAVs.

Duration: 12 months

Completion requirements: On successful completion, students will be eligible for direct entry into the following CQ University Bachelor course as well as gain credit for any units completed.

Further details regarding this program are outlined in the [aviation program information sheet \(PDF, 536KB\)](#).

Further information regarding the SUN program can be found via the [CQU SUN website](#).

Certificate I in Construction (CPC10120)

This course provides an introduction to the construction industry, its culture, occupations, job roles and workplace expectations.

The units of competency cover:

- essential work health and safety requirements
- the industrial and work organisation structure
- communication skills
- work planning
- basic use of tools and materials

Our comprehensive training focuses on general construction skills and workplace preparation. Students will apply their skills and knowledge to practical construction projects and on completion of the course, students will have the ability to tackle a wide range of on-site duties. These duties will include:

- working safely in the construction industry
- planning and organising work
- conducting workplace communication
- carrying out measurements and calculations
- handling construction materials
- many other on-site essentials.

Duration: 12 months including 80 hours structured workplace learning (SWL).

Completion requirements: This qualification will be granted when competency is demonstrated and achieved in a minimum of 11 units as described in the [construction information sheet \(PDF, 624KB\)](#).

Certificate II in Electrotechnology (Career Start)(UEE22020)

This course is offered as a pre-vocational program for students focused on apprenticeships as their future pathway.

Students require high level maths skills (maths methods is preferable, or able to demonstrate a high level of achievement in junior maths and essential maths). Students will learn how to safely solve problems in extra-low voltage DC circuits, identify and select materials for work activities and participate in environmentally sustainable work practices.

Students will also use equipment, plant, technologies and dismantle, assemble and fabricate electro-technology components. This course also includes a general safety induction course (White Card) which is an industry requirement to work on construction sites in Queensland.

Duration: 12 months including 80 hours structured workplace learning (SWL).

Completion requirements: This qualification will be granted when competency is demonstrated and achieved in the tabled 8 core units plus electives as listed in the [electro-technology information sheet \(PDF, 624KB\)](#).

Certificate II in Retail Cosmetics (SHB20116)

Are you seeking entry into the beauty industry ... you have come to the right place!

This very popular course offers our students the most comprehensive training possible whilst at school. This will ensure maximum opportunities in the beauty industry and to find your passion in either beauty or even lead to a pathway in hairdressing or barbering.

We have our own designated salon and offer students individual attention from our qualified industry trainers to support you through the entire course.

Modules to be covered include:

- Luscious lashes
- Make me up
- Night and day looks
- Experts at work
- Customer delight
- Salon sales and displays

On completion, students will have completed one certificate II qualification which will award them with up to 4 QCE points

Our Trainers are committed to providing quality training and nurturing our young people to become skilled, creative beauty and hairdressing prodigies.

Certificate II in Plumbing (11054NAT)

Students can increase their prospects for a career in the plumbing industry by developing skills with this employer standard pre-apprenticeship. With a strong focus on safe plumbing practices, students will learn to safely operate hand and power tools and read and interpret plans.

Calculating quantities and other measurements are also an integral part of this trade and is covered within a unit of competency. Additionally, students will learn the importance of working safely and effectively in the workplace and how to adhere to the industry's regulations and standards.

Students will have the opportunity to perform basic welding and plumbing installation techniques.

Duration: 12 months including 80 hours structured workplace learning (SWL).

Completion requirements: This qualification will be granted when competency is demonstrated and achieved in a minimum of 16 units as described in the [plumbing information sheet \(PDF, 628KB\)](#).

Certificate II in Health Support Services – HLT23215



Qualification Description

Health and community services training is linked to the largest growth industry in Australia, estimated to grow by 20% over the next five years. These programs combine to provide students with entry level skills necessary for a career in the health sector and also provide a pathway to pursue further study. Skills acquired in this course include first aid effective communication, workplace health and safety, infection control, understanding common medical terminology conducting health checks, recognising healthy body systems and working with diverse people.

Electives are packaged in this course offering to provide a qualification with a specialisation in assisting in nursing work in acute care.

Pathways

Potential options may include:

- Various Certificate IV qualifications
- Diploma of Nursing
- Bachelor Degrees (e.g. Bachelor of Nursing)
- Entry level employment within the health industry.

Entry requirements

There are no entry requirements to commence the first year of this qualification; however successful completion of the Certificate II in Health Support Services is required to continue into the Certificate III coursework.

International students may be able to enrol depending on their visa and/or the school's CRICOS registration. Contact the VET Coordinator for more information.

Duration and location

This is a two-year course delivered on site to senior school students and in partnership with IVet.

Course units

Year 1 (Certificate II units)	
HLTWHS001	Participate in workplace health and safety
HLTINF001	Comply with infection prevention and control policies and procedures
CHCCOM005	Communicate and work in health or community services
CHCCCS010	Maintain a high standard of service
CHCCCS020	Respond effectively to behaviours of concern
CHCDIV001	Work with diverse people

Delivery modes

A range of delivery modes will be used during the teaching and learning of this qualification. These include:

- face-to-face training
- practicals and scenarios
- online learning

Assessment

Assessment is competency based. Assessment techniques include:

- observation
- folios of work
- questionnaires
- written and practical tasks

Pathways

This qualification may credit toward various Certificate III's including:

- Certificate III Health Services Assistance
- Certificate III Community Services
- Certificate III Individual Support (Disability and Aged Care)

QCE Points

Maximum 4

Work Experience

Students are encouraged to complete work experience in a health or community service facility to strengthen their skills, knowledge and understanding of the sector.

Fees

The cost of this course is \$550.00.

Students may be able to access funding to help subsidise the cost of their training. Contact the VET Coordinator or IVet to explore potential options. Students are also required to supply their own laptop.

Service agreement

Students will be provided with every opportunity to complete this qualification. Employment is not guaranteed upon completion. Students who are deemed competent in all 12 units of competency will be awarded this qualification and a record of results by IVet (40548). Students who achieve at least one unit of competency (but not the full qualification) will receive a Statement of Attainment.

This information is correct at time of publication but subject to change (April 2023).

HLT33115 - Certificate III in Health Services Assistance (including HLT23215 - Certificate II in Health Support Services)

VET Course



(40548)

Qualification Description

Health and community services training is linked to the largest growth industry in Australia, estimated to grow by 20% over the next five years. These programs combine to provide students with entry level skills necessary for a career in the health sector and also provide a pathway to pursue further study. Skills acquired in this course include first aid effective communication, workplace health and safety, infection control, understanding common medical terminology conducting health checks, recognising healthy body systems and working with diverse people.

Pathways

Potential options may include:

- Various Certificate IV qualifications
- Diploma of Nursing
- Bachelor Degrees (e.g. Bachelor of Nursing)
- Entry level employment within the health industry.

Entry requirements

There are no entry requirements to commence the first year of this qualification; however successful completion of the Certificate II in Health Support Services is required to continue into the Certificate III coursework.

International students may be able to enrol depending on their visa and/or the school's CRICOS registration. Contact the VET Coordinator for more information.

Duration and location

This is a two-year course delivered on site to senior school students and in partnership with IVet.

Course units

Year 1 (Certificate II units)	
HLTWHS001	Participate in workplace health and safety
BSBWOR202	Organise and complete daily work activities
BSBINM201	Process and maintain workplace information
HLTINF001	Comply with infection prevention and control policies and procedures
HLTHSS003	Perform general cleaning tasks in a clinical setting
HLTHSS005	Undertake routine stock maintenance
CHCCOM005	Communicate and work in health or community services
BSBCUS201	Deliver a service to customers
CHCCOM001	Provide first point of contact
CHCCCS010	Maintain a high standard of service
CHCCCS020	Respond effectively to behaviours of concern
CHCDIV001	Work with diverse people

Year 2 (Certificate III units)	
HLTAAP001	Recognise healthy body systems
BSBMED301	Interpret and apply medical terminology
CHCCCS015	Provide individualised support
BSBWOR301	Organise personal work priorities and development
HLTAID011	Provide first aid
HLTAID009	Provide cardiopulmonary resuscitation
BSBMED303	Maintain patient records
CHCCCS009	Facilitate responsible behaviour
HLTWHS002	Follow safe work practices for direct client care

Delivery modes

A range of delivery modes will be used during the teaching and learning of this qualification. These include:

- Face-to-face training
- Practicals and scenarios
- Online learning

Assessment

Assessment is competency based. Assessment techniques include:

- Observation
- Folios of work
- Questionnaires
- Written and practical tasks

Work experience

Students are highly encouraged to complete a minimum of 20 hours work experience in a health or community service facility to strengthen their skills, knowledge and employability.

iVet considers industry experience to be a very important inclusion of the Certificate III qualifications.

RTO Obligation

Students will be provided with every opportunity to complete this qualification. Employment is not guaranteed upon completion. Students deemed competent in all units of competency will be awarded the qualification and a record of results by iVet. Students who achieve at least one unit of competency (but not the full qualification) will receive a Statement of Attainment.

Fees

The total cost of these courses is \$550 (subject to change). This fee covers:

HLT33115 Certificate III in Health Services Assistance + HLT23215 Certificate II in Health Support Services

Students may be able to access funding to help subsidise the cost of their training. Contact the VET Coordinator to explore potential options.

Students are also required to supply their own laptop.

HLT33115 - Certificate III in Health Services Assistance (Assisting in nursing work in acute care)

(including HLT23215 - Certificate II in Health Support Services)

VET Course



Qualification Description

Health and community services training is linked to the largest growth industry in Australia, estimated to grow by 20% over the next five years. These programs combine to provide students with entry level skills necessary for a career in the health sector and also provide a pathway to pursue further study. Skills acquired in this course include first aid effective communication, workplace health and safety, infection control, understanding common medical terminology conducting health checks, recognising healthy body systems and working with diverse people.

Electives are packaged in this course offering to provide a qualification with a specialisation in assisting in nursing work in acute care.

Pathways

Potential options may include:

- Various Certificate IV qualifications
- Diploma of Nursing
- Bachelor Degrees (e.g. Bachelor of Nursing)
- Entry level employment within the health industry.

Entry requirements

There are no entry requirements to commence the first year of this qualification; however successful completion of the Certificate II in Health Support Services is required to continue into the Certificate III coursework.

International students may be able to enrol depending on their visa and/or the school's CRICOS registration. Contact the VET Coordinator for more information.

Duration and location

This is a two-year course delivered on site to senior school students and in partnership with IVet.

Course units

Year 1 (Certificate II units)	
HLTWHS001	Participate in workplace health and safety
HLTINF001	Comply with infection prevention and control policies and procedures
CHCCOM005	Communicate and work in health or community services
CHCCCS010	Maintain a high standard of service
CHCCCS020	Respond effectively to behaviours of concern
CHCDIV001	Work with diverse people

Year 2 (Certificate III units with specialisation)	
HLTAAP001	Recognise healthy body systems
BSBMED301	Interpret and apply medical terminology
CHCCCS015	Provide individualised support
BSBWOR301	Organise personal work priorities and development
HLTAID009	Provide cardiopulmonary resuscitation
HLTAID011	Provide First Aid
CHCCCS009	Facilitate responsible behaviour
HLTAIN001	Assist with nursing care in an acute care environment
HLTAIN002	Provide non-client contact support in an acute care environment
CHCCCS026	Transport individuals
CHCCCS002	Assist with movement

Delivery modes

A range of delivery modes will be used during the teaching and learning of this qualification. These include:

- Face-to-face training
- Practicals and scenarios
- Online learning

Assessment

Assessment is competency based. Assessment techniques include:

- Observation
- Folios of work
- Questionnaires
- Written and practical tasks
- Clinical skills logbook

Work placement

To achieve this qualification with this specialisation, a minimum of 80 hours of work placement, supervised by a registered nurse with current AHPRA registration, must be completed.

RTO Obligation

Students will be provided with every opportunity to complete this qualification. Employment is not guaranteed upon completion. Students deemed competent in all units of competency will be awarded the qualification and a record of results by IVet. Students who achieve at least one unit of competency (but not the full qualification) will receive a Statement of Attainment.

Fees

The total cost of this course is \$900.00 (**\$550.00 for the Certificate II & \$350.00 for the Certificate III AIN *subject to change***). Students may be able to access funding to help subsidise the cost of their training. Contact the VET to explore potential options.

Students are also required to supply their own laptop.

Binnacle Training Offerings

Certificate 3 in Fitness will be delivered at Baringa State Secondary College.

2024 EDITION

SIS30321 CERTIFICATE III IN FITNESS

Binnacle Training (RTO Code 31319)

HOW DOES IT WORK

This qualification provides a pathway to work as a fitness instructor in settings such as fitness facilities, gyms, and leisure and community centres.

Students gain the entry-level skills required of a Fitness Professional (Group Exercise Instructor or Gym Fitness Instructor).

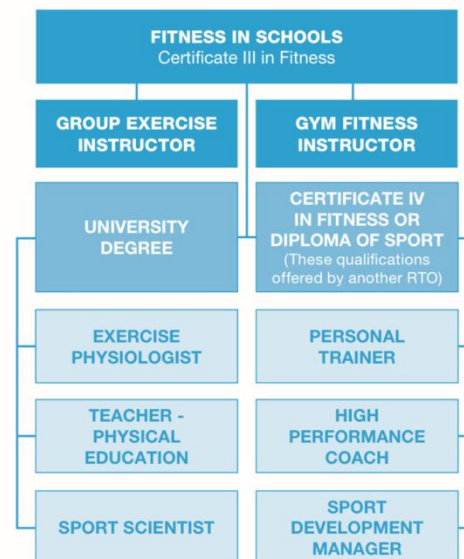
Students facilitate programs within their school community including:

- › Community fitness programs
- › Strength and conditioning for athletes and teams
- › 1-on-1 and group fitness sessions with male adults, female adults and older adult clients

WHAT DO STUDENTS ACHIEVE?

- › SIS30321 Certificate III in Fitness (max. 8 QCE Credits)
- › The nationally recognised First Aid competency - HLTAID011 Provide First Aid
- › Community Coaching - Essential Skills Course (non-accredited), issued by [Australian Sports Commission](#)
- › A range of career pathway options including pathway into SIS40221 Certificate IV in Fitness; or SIS50321 Diploma of Sport - These qualifications offered by another RTO.
- › Successful completion of the Certificate III in Fitness may contribute towards a student's Australian Tertiary Admission Rank (ATAR)

CAREER PATHWAYS



SKILLS ACQUIRED

- › Client screening and health assessment
- › Planning and instructing fitness programs
- › Deliver 1-on-1 and group fitness programs
- › Exercise science and nutrition
- › Anatomy and physiology

FLEXIBLE PROGRAMS

PRACTICAL-BASED LEARNING

RESOURCES PROVIDED



**Binnacle
Training**
RTO CODE 31319



1300 303 715
admin@binnacletraining.com.au
binnacletraining.com.au



SIS30321 CERTIFICATE III IN FITNESS

Registered Training Organisation:
Binnacle Training (RTO 31319)

Delivery Format:
2-Year Format

Timetable Requirements:
1-Timetable Line

Units of Competency:
15 Units

Suitable Year Level(s):
Year 11 and 12

Study Mode:
Combination of classroom and project-based learning, online learning (self-study) and practical work-related experience

Cost (Fee-For-Service):
\$365.00 per person (+ **First Aid \$55.00**)

QCE Outcome:
Maximum 8 QCE Credits

A Language, Literacy and Numeracy (LLN) Screening process is undertaken at the time of initial enrolment (or earlier) to ensure students have the capacity to effectively engage with the content and to identify support measures as required.

TERM 1	TOPICS
	<ul style="list-style-type: none"> › Binnacle Lounge Induction › The Sport, Fitness and Recreation (SFR) Industry › Apply Knowledge of Coaching Practices
TERM 2	PROGRAMS
	<ul style="list-style-type: none"> › Coaching Program (Student Delivery): Plan and Deliver Coaching Sessions › SFR Coaching Program (Supervisor): Assist with Delivering Coaching Sessions
TERM 3	TOPICS
	<ul style="list-style-type: none"> › Perform Research and Create a Group Presentation › Organise and Complete Work Tasks
TERM 4	PROGRAMS
	<ul style="list-style-type: none"> › Group Nutrition Presentation: Create and Deliver a Presentation to your Peers › Community SFR Program #1: Plan and Conduct Community SFR Sessions for Participants
TERM 5	TOPICS
	<ul style="list-style-type: none"> › Cardio and Conditioning Programs › Anatomy and Physiology › The SFR Industry
TERM 6	PROGRAMS
	<ul style="list-style-type: none"> › One-on-One Cardio Program › Group Conditioning Sessions for Adolescent Participants
TERM 7	TOPICS
	<ul style="list-style-type: none"> › Anatomy and Physiology › First Aid Course: HLTAID011 Provide First Aid
TERM 8	PROGRAMS
	<ul style="list-style-type: none"> › Bootcamp Program (Teacher Facilitated): Assist with Delivering Bootcamp Sessions › Community SFR Program #2: Plan and Conduct Community SFR Sessions for Participants
TERM 9	TOPICS
	<ul style="list-style-type: none"> › Anatomy and Physiology › Health and Nutrition Consultations
TERM 10	PROGRAMS
	<ul style="list-style-type: none"> › One-on-One Gym Program: Adolescent Client › Conduct Consultations with a Client (Peer) › Plan and Conduct Sessions (Scenario Clients)
TERM 11	TOPICS
	<ul style="list-style-type: none"> › Screening and Health Assessments › Specific Population Clients › Older Clients
TERM 12	PROGRAMS
	<ul style="list-style-type: none"> › Fitness Orientation Program: Client Orientation › Gentle Exercise Program: Participate in Gentle Exercise Sessions › Mobility Program: Plan and Instruct Mobility Sessions
TERM 13	TOPICS
	<ul style="list-style-type: none"> › Older Clients › Specific Populations
TERM 14	PROGRAMS
	<ul style="list-style-type: none"> › Group Exercise and Gym-based One-on-One Sessions: › Female and Male Adults aged 18+; and › Older adults aged 55+

UNITS OF COMPETENCY

HLTAID011	Provide First Aid	SISFFIT035	Plan group exercise sessions
HLTWHS001	Participate in workplace health and safety	SISFFIT036	Instruct group exercise sessions
SISXEMR001	Respond to emergency situations	SISFFIT032	Complete pre-exercise screening and service orientation
SISXIND001	Work effectively in sport, fitness and recreation environments	SISFFIT033	Complete client fitness assessments
SISXIND002	Maintain sport, fitness and recreation industry knowledge	SISFFIT052	Provide healthy eating information
BSBSUS211	Participate in sustainable work practices	SISFFIT040	Develop and instruct gym-based exercise programs for individual clients
BSBOPS304	Deliver and monitor a service to customers	SISFFIT047	Use anatomy and physiology knowledge to support safe and effective exercise
BSBPEF301	Organise personal work priorities		

Please note this 2024 Course Schedule is current at the time of publishing and should be used as a guide only. This document is to be read in conjunction with Binnacle Training's Program Disclosure Statement (PDS). The PDS sets out the services and training products Binnacle Training as RTO provides and those services carried out by the School as Third Party (i.e. the facilitation of training and assessment services). To access Binnacle's PDS, please visit: www.binnacletraining.com.au/rto

External Provider for Certificate 3 Business is yet to be confirmed, this information is indicative of the course work for this qualification. We are working with school partners to deliver this course at a lower cost.

2024 EDITION

BSB30120 CERTIFICATE III IN BUSINESS

Binnacle Training (RTO Code 31319)

HOW DOES IT WORK

This qualification reflects the role of individuals in a variety of Business Services job roles.

The program will be delivered through class-based tasks as well as both simulated and real business environments at the school - involving the delivery of a range of projects and services within the school community.

This program also includes the following:

- › Student opportunities to design for a new product or service as part of our (non-accredited) Entrepreneurship Project - Binnacle Boss
- › Students examine business opportunities and participate in an Industry discovery

An excellent work readiness program where students develop a range of essential workplace skills.

SKILLS ACQUIRED

- › Leadership, innovation and creative thinking
- › Customer service and teamwork
- › Inclusivity and effective communication
- › WHS and sustainability
- › Financial literacy
- › Business documentation

CAREER PATHWAYS



WHAT DO STUDENTS ACHIEVE?

- › BSB30120 Certificate III in Business (max. 8 QCE Credits)
- › Successful completion of the Certificate III in Business may contribute towards a student's Australian Tertiary Admission Rank (ATAR)

FLEXIBLE PROGRAMS

PROJECT-BASED LEARNING

RESOURCES PROVIDED



**Binnacle
Training**
RTO CODE 31319



1300 303 715
admin@binnacletraining.com.au
binnacletraining.com.au



BSB30120 CERTIFICATE III IN BUSINESS

Registered Training Organisation:
Binnacle Training (RTO 31319)

Delivery Format:
2-Year Format

Timetable Requirements:
1-Timetable Line

**Please consult Binnacle Training to discuss
Fast-Track options.**

Units of Competency:
13 (6 Core Units, 7 Elective Units)

Suitable Year Level(s):
Year 11 and 12

Study Mode:
Combination of classroom and project-based
learning, online learning (self-study) and
practical work-related experience

Cost (Fee-For-Service):
\$265.00 per person

QCE Outcome:
Maximum 8 QCE Credits

A Language, Literacy and Numeracy (LLN) Screening process is undertaken at the time of initial enrolment (or earlier) to ensure students have the capacity to effectively engage with the content and to identify support measures as required.

TERM 1	TOPICS
	<ul style="list-style-type: none"> › Introduction to the Business Services Industry › Personal Wellbeing in the Workplace › Organise Personal Work Priorities
	PROJECTS
	<ul style="list-style-type: none"> › Wellbeing in the Workplace

TERM 2	TOPICS
	<ul style="list-style-type: none"> › Develop and Apply Knowledge of Personal Finances
	PROJECTS
	<ul style="list-style-type: none"> › Knowledge of Personal Finances

TERM 3	TOPICS
	<ul style="list-style-type: none"> › Workplace Health and Safety › Sustainable Work Practices
	PROJECTS
	<ul style="list-style-type: none"> › WHS Processes at the 'Go! Regional' Travel Expo

TERM 4	TOPICS
	<ul style="list-style-type: none"> › Inclusive Work Practices › Engage in Workplace Communication
	PROJECTS
	<ul style="list-style-type: none"> › Inclusivity and Communication in the Workplace

TERM 5	TOPICS
	<ul style="list-style-type: none"> › Work in a Team › Critical Thinking Skills
	PROJECTS
	<ul style="list-style-type: none"> › Critical Thinking at Go! Travel

TERM 6	TOPICS
	<ul style="list-style-type: none"> › Create Electronic Presentations › Creating Presentations Using PowerPoint › Write Simple Documents
	PROJECTS
	<ul style="list-style-type: none"> › Binnacle Boss (Part 1) – Business Proposal

TERM 7	TOPICS
	<ul style="list-style-type: none"> › Critical Thinking and Problem Solving
	PROJECTS
	<ul style="list-style-type: none"> › Binnacle Boss (Part 2) - Market Day / Entrepreneurship Expo

UNITS OF COMPETENCY	
BSBPEF201	Support personal wellbeing in the workplace
BSBPEF301	Organise personal work priorities
FNSFLT311	Develop and apply knowledge of personal finances
BSBWHS311	Assist with maintaining workplace safety
BSBSUS211	Participate in sustainable work practices
BSBXCM301	Engage in workplace communication
BSBTWK301	Use inclusive work practices
BSBXTW301	Work in a team
BSBCRT311	Apply critical thinking skills in a team environment
BSBTEC301	Design and produce business documents
BSBWRT311	Write simple documents
BSBTEC303	Create electronic presentations
BSBOPS304	Deliver and monitor a service to customers

CERTIFICATE IV in Justice Studies (10971NAT)

(RTO – Unity College - 32123)

Certificate IV in Justice Studies		Duration:	2 years
Qualification description:	<p>Certificate IV in Justice Studies is an accredited course. The Certificate IV in Justice Studies is designed by justice professionals for people who would like to achieve employment in the criminal justice system and wish to develop a deeper understanding of the justice system.</p> <p>Aims: The Certificate IV in Justice Studies course is designed to</p> <ul style="list-style-type: none"> provide students with a broad understanding of the justice system develop the personal skills and knowledge which underpin employment in the justice system. 		
Entry requirements:	<p>Academic - There are no formal entry requirements for this course. It is recommended that students have a pass in Year 10 English to demonstrate sufficient spoken and written comprehension to successfully complete all study and assessment requirements.</p> <p>Attitude – students need to demonstrate independent learning skills</p> <p>Students will be required to undertake an LLN test to determine suitability and any support needs.</p>		
Qualification packaging rules:	<p>To attain this certificate, 10 units of competency (6 core and 4 elective) must be completed.</p>		
Units of Competency delivered:	<ol style="list-style-type: none"> NAT10971001 Provide information and referral advice on justice-related issues NAT10971002 Prepare documentation for court proceedings NAT10971003 Analyse social justice issues BSBXCM401 Apply communication strategies in the workplace PSPREG033 Apply Regulatory Powers BSBLEG421 Apply understanding of the Australian Legal System BSBPPEF402 Develop personal work priorities BSBLEG523 Apply legal principles in tort law matters PSPREG010 Prepare a brief of evidence BSBLDR414 Lead team effectiveness or PSPREG012 Gather information through interviews 		
Learning experiences:	<p>Content is delivered in a classroom environment through Legal Studies/Certificate IV in Justice Studies classes or via an online plus face-to face option. Course content provided by the trainer and assessor. This can be in the format of online reading and activities, whole day workshops, 3 x compulsory workshops with industry professionals</p> <p>Technology required: access to the internet</p>		
Assessment:	<p>Evidence contributing towards competency will be collected throughout the program. This process allows a student's competency to be assessed in a holistic approach that integrates a range of competencies. Evidence is gathered through the following; Written projects, Online quizzes, Observation of skills, Oral and written questions.</p>		
Pathways:	<p>The Certificate IV in Justice Studies is recommended for students looking to gain employment or further study opportunities in justice and law related fields such as the police service, justice related occupations, corrective services, courts, legal offices, customs service, security industry and private investigations.</p>		
Course Costs:	<p>\$750 up-front fee (current at 30th September 2022)</p>		
Further information	<p>Refund Policy: Refund for students exiting a certificate course is on prorated basis related to the unit/s of competency covered (less a \$50.00 administration fee). Students must have evidence of the reason/s why exit from the course is being sought (e.g. a medical certificate or show extreme personal hardship). Applications for refund are made to the Unity College Principal and are at the discretion of the Principal.</p>		